



Datasheet for ABIN2781838
anti-PRRG2 antibody (Middle Region)



[Go to Product page](#)

2 Images

Overview

| | |
|----------------------|---|
| Quantity: | 100 µL |
| Target: | PRRG2 |
| Binding Specificity: | Middle Region |
| Reactivity: | Human, Mouse, Rat, Cow, Dog, Guinea Pig, Horse, Pig |
| Host: | Rabbit |
| Clonality: | Polyclonal |
| Conjugate: | This PRRG2 antibody is un-conjugated |
| Application: | Western Blotting (WB) |

Product Details

| | |
|-----------------------|---|
| Immunogen: | The immunogen is a synthetic peptide directed towards the middle region of human PRRG2 |
| Sequence: | RCSWEEAREY FEDNLTTERF WESYIYNGKG GRGRVDVASL AVGLTGGILL |
| Predicted Reactivity: | Cow: 86%, Dog: 100%, Guinea Pig: 83%, Horse: 93%, Human: 100%, Mouse: 100%, Pig: 100%, Rat: 100% |
| Characteristics: | This is a rabbit polyclonal antibody against PRRG2. It was validated on Western Blot using a cell lysate as a positive control. |
| Purification: | Affinity Purified |

Target Details

| | |
|---------|-------|
| Target: | PRRG2 |
|---------|-------|

Target Details

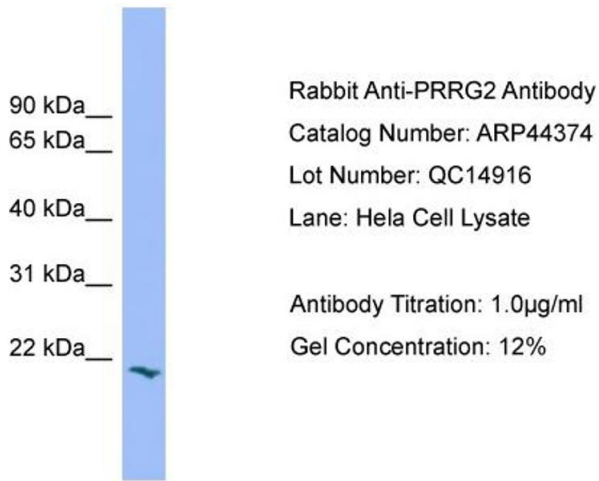
| | |
|-------------------|--|
| Alternative Name: | PRRG2 (PRRG2 Products) |
| Background: | The function of this protein remains unknown. Alias Symbols: PRGP2 Protein Interaction Partner: FATE1, BAG3, NEDD4, Protein Size: 202 |
| Molecular Weight: | 22 kDa |
| Gene ID: | 5639 |
| NCBI Accession: | NM_000951 , NP_000942 |
| UniProt: | O14669 |

Application Details

| | |
|--------------------|--|
| Application Notes: | Optimal working dilutions should be determined experimentally by the investigator. |
| Comment: | Antigen size: 202 AA |
| Restrictions: | For Research Use only |

Handling

| | |
|--------------------|---|
| Format: | Liquid |
| Concentration: | Lot specific |
| Buffer: | Liquid. Purified antibody supplied in 1x PBS buffer with 0.09 % (w/v) sodium azide and 2 % sucrose. |
| Preservative: | Sodium azide |
| Precaution of Use: | This product contains Sodium azide: a POISONOUS AND HAZARDOUS SUBSTANCE which should be handled by trained staff only. |
| Handling Advice: | Avoid repeated freeze-thaw cycles. |
| Storage: | -20 °C |
| Storage Comment: | For short term use, store at 2-8°C up to 1 week. For long term storage, store at -20°C in small aliquots to prevent freeze-thaw cycles. |



Western Blotting

Image 1. WB Suggested Anti-PRRG2

Antibody Titration: 0.2-1 µg/mL

Positive Control: HeLa cell lysate



Western Blotting

Image 2. WB Suggested Anti-PRRG2 Antibody Titration: 0.2-

1 ug/ml Positive Control: HeLa cell lysate