



[Go to Product page](#)

Datasheet for ABIN2781848  
**anti-TM6SF2 antibody (C-Term)**

2 Images

2 Publications

### Overview

Quantity:	100 µL
Target:	TM6SF2
Binding Specificity:	C-Term
Reactivity:	Human, Rat, Mouse, Rabbit, Dog, Guinea Pig, Horse, Cow
Host:	Rabbit
Clonality:	Polyclonal
Conjugate:	This TM6SF2 antibody is un-conjugated
Application:	Western Blotting (WB)

### Product Details

Immunogen:	The immunogen is a synthetic peptide directed towards the C-terminal region of Human TM6SF2
Sequence:	FFTLFRGLVV LDCPTDACFV YIQYEPYLR DPVAYPKVQM LMYMFYVLPF
Predicted Reactivity:	Cow: 93%, Dog: 100%, Guinea Pig: 100%, Horse: 100%, Human: 100%, Mouse: 100%, Rabbit: 75%, Rat: 100%
Characteristics:	This is a rabbit polyclonal antibody against TM6SF2. It was validated on Western Blot.
Purification:	Affinity Purified

### Target Details

Target:	TM6SF2
---------	--------

## Target Details

---

Alternative Name:	TM6SF2 ( <a href="#">TM6SF2 Products</a> )
Background:	The function of this protein remains unknown. Protein Size: 350
Molecular Weight:	38 kDa
Gene ID:	53345

## Application Details

---

Application Notes:	Optimal working dilution should be determined by the investigator.
Restrictions:	For Research Use only

## Handling

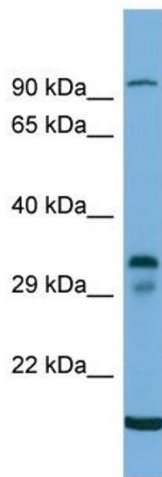
---

Format:	Liquid
Concentration:	1 mg/mL
Buffer:	Liquid. Purified antibody supplied in 1x PBS buffer with 0.09 % (w/v) sodium azide and 2 % sucrose.
Preservative:	Sodium azide
Precaution of Use:	This product contains Sodium azide: a POISONOUS AND HAZARDOUS SUBSTANCE which should be handled by trained staff only.
Handling Advice:	Avoid repeat freeze-thaw cycles.
Storage:	-20 °C
Storage Comment:	For short term use, store at 2-8°C up to 1 week. For long term storage, store at -20°C in small aliquots to prevent freeze-thaw cycles.

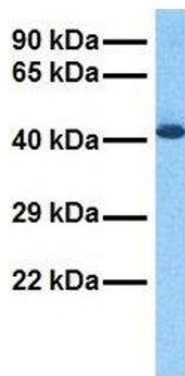
## Publications

---

Product cited in:	Spellman, Ahmed, Dubach, Gardiner: "Expression of trisomic proteins in Down syndrome model systems." in: <b>Gene</b> , Vol. 512, Issue 2, pp. 219-25, (2012) ( <a href="#">PubMed</a> ).
-------------------	--



## TM6SF2



### Western Blotting

**Image 1.** Host: Rabbit Target Name: TM6SF2 Sample Type: 293T Whole cell lysates Antibody Dilution: 1.0ug/ml

### Western Blotting

**Image 2.** Host: Rabbit Target Name: TM6SF2 Sample Tissue: Human Fetal Liver Antibody Dilution: 1.0ug/ml