

Datasheet for ABIN2781851 **anti-ATP1B1 antibody (N-Term)**

2 Images



[Go to Product page](#)

Overview

Quantity:	100 µL
Target:	ATP1B1
Binding Specificity:	N-Term
Reactivity:	Human, Mouse, Rat, Dog, Cow, Rabbit, Guinea Pig, Sheep, Horse
Host:	Rabbit
Clonality:	Polyclonal
Conjugate:	This ATP1B1 antibody is un-conjugated
Application:	Western Blotting (WB), Immunohistochemistry (IHC)

Product Details

Immunogen:	The immunogen is a synthetic peptide directed towards the N terminal region of human ATP1B1
Sequence:	RVAPPGLTQI PQIQKTEISF RPNDPKSYEA YVLNIVRFLE KYKDSAQRDD
Predicted Reactivity:	Cow: 93%, Dog: 100%, Guinea Pig: 93%, Horse: 100%, Human: 100%, Mouse: 100%, Rabbit: 86%, Rat: 100%, Sheep: 93%
Characteristics:	This is a rabbit polyclonal antibody against ATP1B1. It was validated on Western Blot using a cell lysate as a positive control.
Purification:	Affinity Purified

Target Details

Target:	ATP1B1
---------	--------

Target Details

Alternative Name:	ATP1B1 (ATP1B1 Products)
Background:	<p>ATP1B1 belongs to the family of Na⁺/K⁺ and H⁺/K⁺ ATPases beta chain proteins, and to the subfamily of Na⁺/K⁺ -ATPases. Na⁺/K⁺ -ATPase is an integral membrane protein responsible for establishing and maintaining the electrochemical gradients of Na and K io</p> <p>Alias Symbols: ATP1B, MGC1798</p> <p>Protein Interaction Partner: Bace1, EGFR, ATP4A, UBC, BRCA1, BARD1, PAXIP1, GCH1, USP4, NEDD4L, ELAVL1, NDRG2, TRMT2A, DDAH2, HLA-DRB1, HLA-DRA, EZH2, CRIP2, KMT2B, PSME1, HLA-DRB5, HLA-DRB4, HLA-DRB3, LRIF1, FXYD7, FXYD1,</p> <p>Protein Size: 301</p>
Molecular Weight:	35 kDa
Gene ID:	481
NCBI Accession:	NM_001001787 , NP_001001787
UniProt:	A6NGH2
Pathways:	Thyroid Hormone Synthesis , Ribonucleoside Biosynthetic Process , SARS-CoV-2 Protein Interactome

Application Details

Application Notes:	Optimal working dilutions should be determined experimentally by the investigator.
Comment:	Antigen size: 301 AA
Restrictions:	For Research Use only

Handling

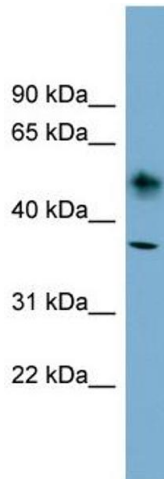
Format:	Liquid
Concentration:	Lot specific
Buffer:	Liquid. Purified antibody supplied in 1x PBS buffer with 0.09 % (w/v) sodium azide and 2 % sucrose.
Preservative:	Sodium azide
Precaution of Use:	This product contains Sodium azide: a POISONOUS AND HAZARDOUS SUBSTANCE which should be handled by trained staff only.
Handling Advice:	Avoid repeated freeze-thaw cycles.

Handling

Storage: -20 °C

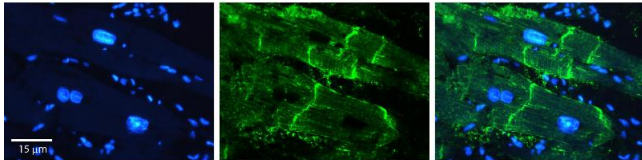
Storage Comment: For short term use, store at 2-8°C up to 1 week. For long term storage, store at -20°C in small aliquots to prevent freeze-thaw cycles.

Images



Western Blotting

Image 1. WB Suggested Anti-ATP1B1 Antibody Titration: 0.2-1 ug/ml Positive Control: OVCAR-3 cell lysate



Immunohistochemistry

Image 2. Rabbit Anti-ATP1B1 Antibody Formalin Fixed Paraffin Embedded Tissue: Human heart Tissue Observed Staining: Plasma membrane in intercalated disk Primary Antibody Concentration: 1:100 Other Working Concentrations: 1:600 Secondary Antibody: Donkey anti-Rabbit-Cy3 Secondary Antibody Concentration: 1:200 Magnification: 20X Exposure Time: 0.5 - 2.0 sec