

Datasheet for ABIN2781854  
**anti-MTUS1 antibody (N-Term)**

## 3 Images

[Go to Product page](#)

## Overview

Quantity:	100 µL
Target:	MTUS1
Binding Specificity:	N-Term
Reactivity:	Human, Mouse, Rat, Dog, Guinea Pig, Rabbit, Cow, Horse
Host:	Rabbit
Clonality:	Polyclonal
Conjugate:	This MTUS1 antibody is un-conjugated
Application:	Western Blotting (WB)

## Product Details

Immunogen:	The immunogen is a synthetic peptide directed towards the N terminal region of human MTUS1
Sequence:	QLLAGNTKF EALTVDIHL LSEREEALKQ HKTLSQLVN LRGLVTAST
Predicted Reactivity:	Cow: 93%, Dog: 100%, Guinea Pig: 100%, Horse: 100%, Human: 100%, Mouse: 100%, Rabbit: 100%, Rat: 100%
Characteristics:	This is a rabbit polyclonal antibody against MTUS1. It was validated on Western Blot using a cell lysate as a positive control.
Purification:	Protein A purified

## Target Details

Target:	MTUS1
---------	-------

## Target Details

Alternative Name:	MTUS1 ( <a href="#">MTUS1 Products</a> )
Background:	<p>MTUS1 contains a C-terminal domain and is able to interact with the angiotension II (AT2) receptor and a large coiled-coil region allowing dimerization. One of the isoforms has been shown to be a mitochondrial protein that acts as a tumor suppressor and participates in AT2 signaling pathways. Other isoforms may be nuclear or transmembrane proteins but it has not been determined whether they also participate in AT2 signaling pathways. This gene encodes a protein which contains a C-terminal domain able to interact with the angiotension II (AT2) receptor and a large coiled-coil region allowing dimerization. Multiple alternatively spliced transcript variants encoding different isoforms have been found for this gene. One of the transcript variants has been shown to encode a mitochondrial protein that acts as a tumor suppressor and participates in AT2 signaling pathways. Other variants may encode nuclear or transmembrane proteins but it has not been determined whether they also participate in AT2 signaling pathways.</p> <p>Alias Symbols: ATIP, DKFZp586D1519, DKFZp686F20243, FLJ14295, KIAA1288, MP44, MTSG1, ATBP</p> <p>Protein Interaction Partner: UBC, MMS19, ORC4, Ptpn6, MTUS1, AGTR2,</p> <p>Protein Size: 436</p>
Molecular Weight:	48 kDa
Gene ID:	57509
NCBI Accession:	<a href="#">NM_020749</a> , <a href="#">NP_065800</a>

## Application Details

Application Notes:	Optimal working dilutions should be determined experimentally by the investigator.
Comment:	Antigen size: 436 AA
Restrictions:	For Research Use only

## Handling

Format:	Liquid
Concentration:	Lot specific
Buffer:	Liquid. Purified antibody supplied in 1x PBS buffer with 0.09 % (w/v) sodium azide and 2 % sucrose.
Preservative:	Sodium azide

Handling

Precaution of Use:	This product contains Sodium azide: a POISONOUS AND HAZARDOUS SUBSTANCE which should be handled by trained staff only.
Handling Advice:	Avoid repeated freeze-thaw cycles.
Storage:	-20 °C
Storage Comment:	For short term use, store at 2-8°C up to 1 week. For long term storage, store at -20°C in small aliquots to prevent freeze-thaw cycles.

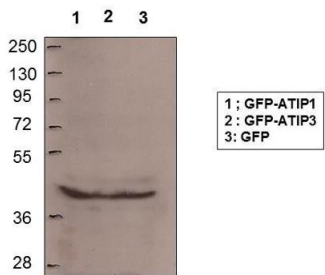
Images



Anti-MTUS1 Aviva ref: [ARP44418-T010](#)

Western Blotting

Image 1. WB Suggested Anti-MTUS1 Antibody Titration:  
1.25ug/ml  
**Positive Control:** Jurkat cell lysate



MCF7 cellstransfected with GFP-ATIP1 (80 KDa), GFP-ATIP3 (210 KDa), GFP (30 KDa)  
Western blot on total cell lysates,  
Antibody dilution 1:200  
Dr. Clara Nahmias March 2011

Image 2.

Western Blotting

**Image 3.** WB Suggested Anti-MTUS1 Antibody Titration:  
Positive Control: Total Cell Lysates

