

Datasheet for ABIN2781855
anti-MTUS1 antibody (Middle Region)

12 Images

[Go to Product page](#)

Overview

Quantity:	100 µL
Target:	MTUS1
Binding Specificity:	Middle Region
Reactivity:	Human, Mouse, Rat, Dog, Guinea Pig, Rabbit, Cow
Host:	Rabbit
Clonality:	Polyclonal
Conjugate:	This MTUS1 antibody is un-conjugated
Application:	Western Blotting (WB), Immunohistochemistry (IHC)

Product Details

Immunogen:	The immunogen is a synthetic peptide directed towards the middle region of human MTUS1
Sequence:	KRLSMENEEL LWKLHNGDLC SPKRSPTSSA IPLQSPRNSG SFPSPSISPR
Predicted Reactivity:	Cow: 100%, Dog: 100%, Guinea Pig: 86%, Human: 100%, Mouse: 93%, Rabbit: 86%, Rat: 93%
Characteristics:	This is a rabbit polyclonal antibody against MTUS1. It was validated on Western Blot using a cell lysate as a positive control.
Purification:	Affinity Purified

Target Details

Target:	MTUS1
Alternative Name:	MTUS1 (MTUS1 Products)

Target Details

Background:	<p>MTUS1 contains a C-terminal domain and is able to interact with the angiotension II (AT2) receptor and a large coiled-coil region allowing dimerization. One of the isoforms has been shown to be a mitochondrial protein that acts as a tumor suppressor and participates in AT2 signaling pathways. Other isoforms may be nuclear or transmembrane proteins but it has not been determined whether they also participate in AT2 signaling pathways. This gene encodes a protein which contains a C-terminal domain able to interact with the angiotension II (AT2) receptor and a large coiled-coil region allowing dimerization. Multiple alternatively spliced transcript variants encoding different isoforms have been found for this gene. One of the transcript variants has been shown to encode a mitochondrial protein that acts as a tumor suppressor and participates in AT2 signaling pathways. Other variants may encode nuclear or transmembrane proteins but it has not been determined whether they also participate in AT2 signaling pathways.</p> <p>Alias Symbols: ATIP, DKFZp586D1519, DKFZp686F20243, FLJ14295, KIAA1288, MP44, MTSG1, ATBP</p> <p>Protein Interaction Partner: UBC, MMS19, ORC4, Ptpn6, MTUS1, AGTR2,</p> <p>Protein Size: 1270</p>
-------------	--

Molecular Weight:	141 kDa
-------------------	---------

Gene ID:	57509
----------	-------

NCBI Accession:	NM_001001924 , NP_001001924
-----------------	---

UniProt:	Q9ULD2
----------	------------------------

Application Details

Application Notes:	Optimal working dilutions should be determined experimentally by the investigator.
--------------------	--

Comment:	Antigen size: 1270 AA
----------	-----------------------

Restrictions:	For Research Use only
---------------	-----------------------

Handling

Format:	Liquid
---------	--------

Concentration:	Lot specific
----------------	--------------

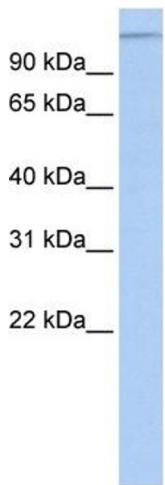
Buffer:	Liquid. Purified antibody supplied in 1x PBS buffer with 0.09 % (w/v) sodium azide and 2 % sucrose.
---------	---

Preservative:	Sodium azide
---------------	--------------

Handling

Precaution of Use:	This product contains Sodium azide: a POISONOUS AND HAZARDOUS SUBSTANCE which should be handled by trained staff only.
Handling Advice:	Avoid repeated freeze-thaw cycles.
Storage:	-20 °C
Storage Comment:	For short term use, store at 2-8°C up to 1 week. For long term storage, store at -20°C in small aliquots to prevent freeze-thaw cycles.

Images

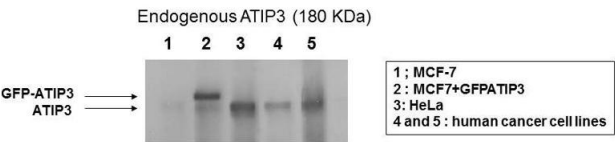


Anti-MTUS1 Aviva ref : [ARP44419-P050](#)

Western Blotting

Image 1. WB Suggested Anti-MTUS1 Antibody Titration: 0.2-1 ug/ml ELISA Titer: 1:1562500 Positive Control: HeLa cell lysate MTUS1 is strongly supported by BioGPS gene expression data to be expressed in Human HeLa cells

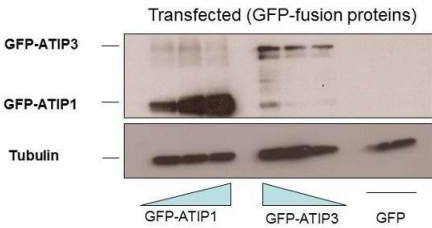
Image 2.



Western blot on total cell lysates,
Antibody dilution 1:2000

Dr. Clara Nahmias March 2011

Anti-MTUS1 Aviva ref : [ARP44419-P050](#)



MCF7 cells transfected with GFP-ATIP1 (80 KDa), GFP-ATIP3 (210 KDa), GFP (30 KDa)
Western blot on total cell lysates,
Antibody dilution 1:2000

Reblotted anti-tubulin

Dr. Clara Nahmias March 2011

Image 3.

Please check the [product details page](#) for more images. Overall 12 images are available for ABIN2781855.