



[Go to Product page](#)

Datasheet for ABIN2781857

anti-LCLAT1 antibody (Middle Region)

3 Images

1 Publication

Overview

Quantity:	100 µL
Target:	LCLAT1
Binding Specificity:	Middle Region
Reactivity:	Mouse, Human, Rat, Rabbit, Cow, Dog, Guinea Pig, Horse
Host:	Rabbit
Clonality:	Polyclonal
Conjugate:	This LCLAT1 antibody is un-conjugated
Application:	Western Blotting (WB)

Product Details

Immunogen:	The immunogen is a synthetic peptide directed towards the middle region of human LYCAT
Sequence:	YLYSLVKWYF IITIVIFVLQ ERIFGGLEII ELACYRLLHK QPHLNSKKNE
Predicted Reactivity:	Cow: 93%, Dog: 92%, Guinea Pig: 92%, Horse: 93%, Human: 100%, Mouse: 92%, Rabbit: 100%, Rat: 92%
Characteristics:	This is a rabbit polyclonal antibody against LYCAT. It was validated on Western Blot using a cell lysate as a positive control.
Purification:	Affinity Purified

Target Details

Target:	LCLAT1
---------	--------

Target Details

Alternative Name: LYCAT ([LCLAT1 Products](#))

Background: LYCAT is an acyl-CoA:lysocardiolipin acyltransferase. It possesses both lysophosphatidylinositol acyltransferase (LPIAT) and lysophosphatidylglycerol acyltransferase (LPGAT) activities. LYCAT recognizes both monolysocardiolipin and dilyocardiolipin as substrates with a preference for linoleoyl-CoA and oleoyl-CoA as acyl donors. LYCAT acts as a remodeling enzyme for cardiolipin, a major membrane polyglycerophospholipid. It converts lysophosphatidic acid (LPA) into phosphatidic acid (PA) with a relatively low activity. LYCAT is required for establishment of the hematopoietic and endothelial lineages.

Alias Symbols: ALCAT1, FLJ37965, UNQ1849, LYCAT, AGPAT8, 1AGPAT8, HSRG1849

Protein Interaction Partner: LNX1, GOPC, RNF2, UBC, ELAVL1,

Protein Size: 376

Molecular Weight: 44 kDa

Gene ID: 253558

NCBI Accession: [NM_001002257](#), [NP_001002257](#)

UniProt: [Q6UWP7](#)

Application Details

Application Notes: Optimal working dilutions should be determined experimentally by the investigator.

Comment: Antigen size: 376 AA

Restrictions: For Research Use only

Handling

Format: Liquid

Concentration: Lot specific

Buffer: Liquid. Purified antibody supplied in 1x PBS buffer with 0.09 % (w/v) sodium azide and 2 % sucrose.

Preservative: Sodium azide

Precaution of Use: This product contains Sodium azide: a POISONOUS AND HAZARDOUS SUBSTANCE which should be handled by trained staff only.

Handling Advice: Avoid repeated freeze-thaw cycles.

Handling

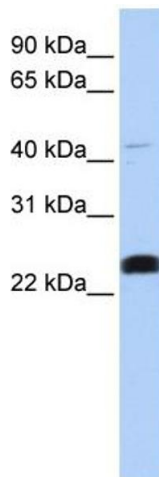
Storage: -20 °C

Storage Comment: For short term use, store at 2-8°C up to 1 week. For long term storage, store at -20°C in small aliquots to prevent freeze-thaw cycles.

Publications

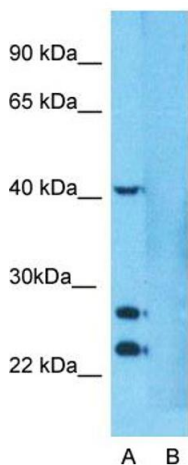
Product cited in: Rind, Schmeiser, Thiel, Absmanner, Lübbehusen, Hocks, Apeshiotis, Wilichowski, Lehle, Körner: "A severe human metabolic disease caused by deficiency of the endoplasmatic mannosyltransferase hALG11 leads to congenital disorder of glycosylation-Ip." in: **Human molecular genetics**, Vol. 19, Issue 8, pp. 1413-24, (2010) ([PubMed](#)).

Images



Western Blotting

Image 1. WB Suggested Anti-LYCAT Antibody Titration: 0.2-1 ug/ml ELISA Titer: 1:1562500 Positive Control: 721_B cell lysate



Anti-LCLAT1 Western Blot & Peptide Block Validation

Lot Number: QC14266

Lysate: 721_B Cell

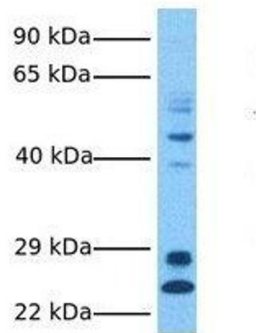
Lane A: Primary Antibody
Lane B: Primary Antibody + Blocking Peptide

Primary Antibody Concentration: 2.0 µg/ml
Peptide Concentration: 5.0 µg/ml
Lysate Quantity: 25 µg/lane
Gel Concentration: 12%

Western Blotting

Image 2. Host: Rabbit
Target Name: LCLAT1
Sample Tissue: Human 721_B cell
Lane A: Primary Antibody Lane B: Primary Antibody + Blocking Peptide
Primary Antibody Concentration: 1 µg/mL Peptide Concentration: 5.0 µg/mL Lysate Quantity: 41 µg/lane/laneGel Concentration: 12 %

LYCAT



Western Blotting

Image 3. Host: Rabbit Target Name: LYCAT Sample Tissue: Human Fetal Liver Antibody Dilution: 1.0ug/ml