

Datasheet for ABIN2781867  
**anti-MCTP1 antibody (Middle Region)**[Go to Product page](#)

## 4 Images

## Overview

Quantity:	100 µL
Target:	MCTP1
Binding Specificity:	Middle Region
Reactivity:	Human, Mouse, Guinea Pig, Horse, Rat, Zebrafish (Danio rerio), Dog, Cow, Rabbit
Host:	Rabbit
Clonality:	Polyclonal
Conjugate:	This MCTP1 antibody is un-conjugated
Application:	Western Blotting (WB), Immunohistochemistry (IHC)

## Product Details

Immunogen:	The immunogen is a synthetic peptide directed towards the middle region of human MCTP1
Sequence:	LVWGINKFTK KLRSPYAIDN NELLDFLSRV PSDVQVVQYQ ELKPDP SHSP
Predicted Reactivity:	Cow: 93%, Dog: 100%, Guinea Pig: 100%, Horse: 100%, Human: 100%, Mouse: 100%, Rabbit: 86%, Rat: 100%, Zebrafish: 86%
Characteristics:	This is a rabbit polyclonal antibody against MCTP1. It was validated on Western Blot using a cell lysate as a positive control.
Purification:	Affinity Purified

## Target Details

Target:	MCTP1
---------	-------

## Target Details

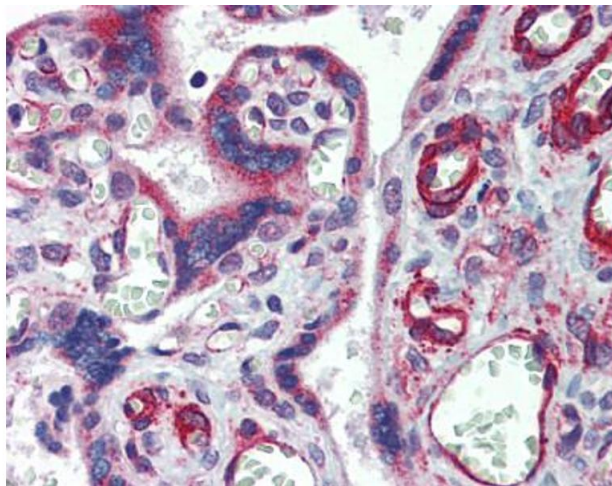
Alternative Name:	MCTP1 ( <a href="#">MCTP1 Products</a> )
Background:	<p>MCTP1 belongs to the MCTP family. It contains 3 C2 domains. MCTP1 is a multi-pass membrane protein. It binds calcium via the C2 domains in absence of phospholipids. The function of MCTP1 remains unknown.</p> <p>Alias Symbols: FLJ22344</p> <p>Protein Size: 778</p>
Molecular Weight:	89 kDa
Gene ID:	79772
NCBI Accession:	<a href="#">NM_001002796</a> , <a href="#">NP_001002796</a>

## Application Details

Application Notes:	Optimal working dilutions should be determined experimentally by the investigator.
Comment:	Antigen size: 778 AA
Restrictions:	For Research Use only

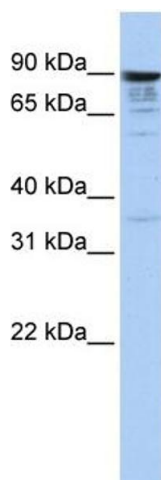
## Handling

Format:	Liquid
Concentration:	Lot specific
Buffer:	Liquid. Purified antibody supplied in 1x PBS buffer with 0.09 % (w/v) sodium azide and 2 % sucrose.
Preservative:	Sodium azide
Precaution of Use:	This product contains Sodium azide: a POISONOUS AND HAZARDOUS SUBSTANCE which should be handled by trained staff only.
Handling Advice:	Avoid repeated freeze-thaw cycles.
Storage:	-20 °C
Storage Comment:	For short term use, store at 2-8°C up to 1 week. For long term storage, store at -20°C in small aliquots to prevent freeze-thaw cycles.



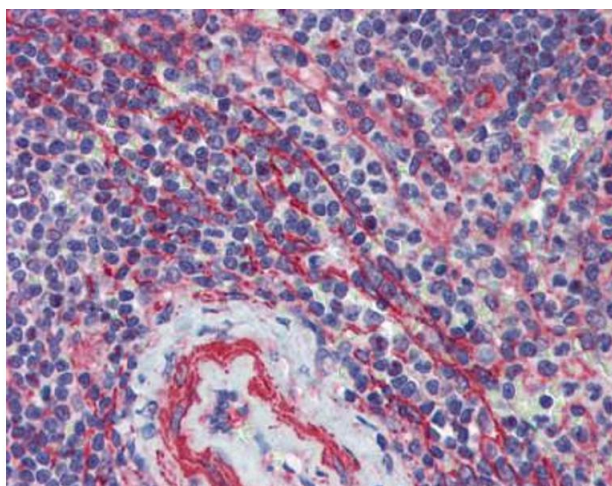
#### Immunohistochemistry

**Image 1.**



#### Western Blotting

**Image 2.** WB Suggested Anti-MCTP1 Antibody Titration: 1 ug/ml Positive Control: Hela cell lysate



#### Immunohistochemistry

**Image 3.** Anti-MCTP1 antibody IHC staining of human spleen. Immunohistochemistry of formalin-fixed, paraffin-embedded tissue after heat-induced antigen retrieval. Antibody concentration 5 ug/ml.

Please check the [product details page](#) for more images. Overall 4 images are available for ABIN2781867.