



[Go to Product page](#)

Datasheet for ABIN2781868

## anti-Derlin-3 antibody (Middle Region)

### 3 Images

#### Overview

|                      |   |
|----------------------|---|
| Quantity:            | 100 µL  |
| Target:              | Derlin-3 (DERL3)  |
| Binding Specificity: | Middle Region   |
| Reactivity:          | Human, Mouse, Rat, Guinea Pig, Rabbit, Zebrafish (Danio rerio), Cow, Dog, Horse, Goat |
| Host:                | Rabbit  |
| Clonality:           | Polyclonal  |
| Conjugate:           | This Derlin-3 antibody is un-conjugated   |
| Application:         | Western Blotting (WB)   |

#### Product Details

|                       |  |
|-----------------------|--|
| Immunogen:            | The immunogen is a synthetic peptide directed towards the middle region of human DERL3   |
| Sequence:             | FFNMLFVFR YCRMLEEGSF RGRTADFVFM FLFGGVLMTL LGLLGSFLFL  |
| Predicted Reactivity: | Cow: 100%, Dog: 100%, Goat: 92%, Guinea Pig: 100%, Horse: 100%, Human: 100%, Mouse: 100%, Rabbit: 100%, Rat: 100%, Zebrafish: 100% |
| Characteristics:      | This is a rabbit polyclonal antibody against DERL3. It was validated on Western Blot.  |
| Purification:         | Affinity Purified  |

#### Target Details

|                   |  |
|-------------------|--|
| Target:           | Derlin-3 (DERL3)                         |
| Alternative Name: | DERL3 ( <a href="#">DERL3 Products</a> ) |

## Target Details

---

**Background:** DERL3 belongs to the derlin family, and resides in the endoplasmic reticulum (ER). Proteins that are unfolded or misfolded in the ER must be refolded or degraded to maintain the homeostasis of the ER. This protein appears to be involved in the degradation of misfolded glycoproteins in the ER. Several alternatively spliced transcript variants encoding different isoforms have been identified for this gene.

Alias Symbols: C22orf14, IZP6, LLN2, MGC71803, derlin-3

Protein Interaction Partner: ERN1, UBE2J1, SERPINA1, MFI2, AMFR,

Protein Size: 235

---

**Molecular Weight:** 27 kDa

---

**Gene ID:** 91319

---

**NCBI Accession:** [NM\\_001002862](#), [NP\\_001002862](#)

---

**UniProt:** [Q96Q80](#)

---

**Pathways:** [ER-Nucleus Signaling](#)

---

## Application Details

---

**Application Notes:** Optimal working dilutions should be determined experimentally by the investigator.

---

**Comment:** Antigen size: 235 AA

---

**Restrictions:** For Research Use only

---

## Handling

---

**Format:** Liquid

---

**Concentration:** Lot specific

---

**Buffer:** Liquid. Purified antibody supplied in 1x PBS buffer with 0.09 % (w/v) sodium azide and 2 % sucrose.

---

**Preservative:** Sodium azide

---

**Precaution of Use:** This product contains Sodium azide: a POISONOUS AND HAZARDOUS SUBSTANCE which should be handled by trained staff only.

---

**Handling Advice:** Avoid repeated freeze-thaw cycles.

---

**Storage:** -20 °C

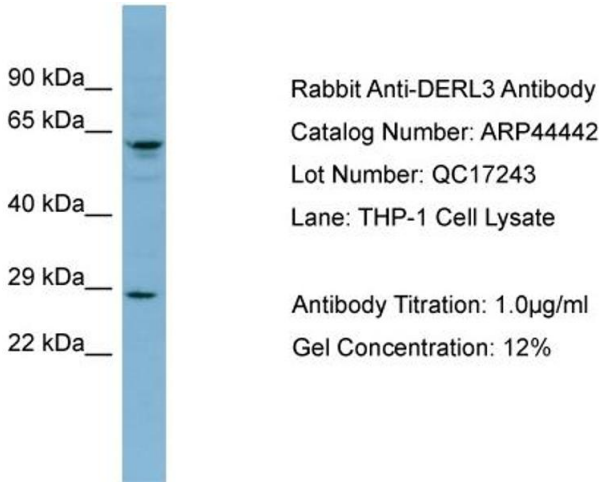
---

**Storage Comment:** For short term use, store at 2-8°C up to 1 week. For long term storage, store at -20°C in small

---

aliquots to prevent freeze-thaw cycles.

Images



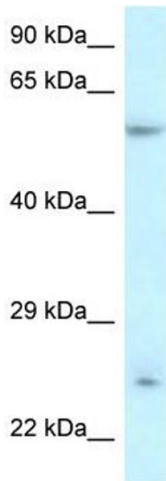
Western Blotting

**Image 1. WB Suggested Anti-DERL3 Antibody Titration:**

0.2-1 ug/ml

**ELISA Titer:** 1:12500

**Positive Control:** THP-1 cell lysate



Western Blotting

**Image 2. WB Suggested Anti-DERL3 Antibody Titration:** 0.2-

1 ug/ml ELISA Titer: 1:12500 Positive Control: THP-1 cell lysate



Western Blotting

**Image 3. Host:** Rabbit **Target Name:** DERL3 **Sample Tissue:**

Human Liver Tumor Antibody Dilution: 1ug/ml