



[Go to Product page](#)

Datasheet for ABIN2781871  
**anti-TMEM200B antibody (N-Term)**

1 Image

Overview

Quantity:	100 µL
Target:	TMEM200B
Binding Specificity:	N-Term
Reactivity:	Human, Dog, Guinea Pig
Host:	Rabbit
Clonality:	Polyclonal
Conjugate:	This TMEM200B antibody is un-conjugated
Application:	Western Blotting (WB)

Product Details

Immunogen:	The immunogen is a synthetic peptide directed towards the N terminal region of human TTMB
Sequence:	AGYWPHRAGA PGSRAANASS PQMSELRREG RGGGRAHGPH ERLRLGPVI
Predicted Reactivity:	Dog: 85%, Guinea Pig: 86%, Human: 100%
Characteristics:	This is a rabbit polyclonal antibody against TTMB. It was validated on Western Blot using a cell lysate as a positive control.
Purification:	Affinity Purified

Target Details

Target:	TMEM200B
Alternative Name:	TTMB ( <a href="#">TMEM200B Products</a> )

## Target Details

---

Background:	TTMB is a multi-pass membrane protein. It belongs to the TMEM200 family. The function of the TTMB protein remains unknown. Alias Symbols: MGC102864, MGC90489, TTMB Protein Size: 307
Molecular Weight:	33 kDa
Gene ID:	399474
NCBI Accession:	<a href="#">NM_001003682</a> , <a href="#">NP_001003682</a>
UniProt:	<a href="#">Q69YZ2</a>

## Application Details

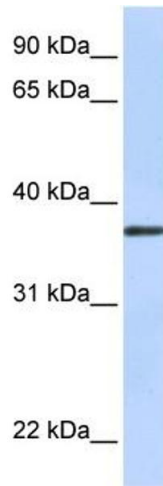
---

Application Notes:	Optimal working dilutions should be determined experimentally by the investigator.
Comment:	Antigen size: 307 AA
Restrictions:	For Research Use only

## Handling

---

Format:	Liquid
Concentration:	Lot specific
Buffer:	Liquid. Purified antibody supplied in 1x PBS buffer with 0.09 % (w/v) sodium azide and 2 % sucrose.
Preservative:	Sodium azide
Precaution of Use:	This product contains Sodium azide: a POISONOUS AND HAZARDOUS SUBSTANCE which should be handled by trained staff only.
Handling Advice:	Avoid repeated freeze-thaw cycles.
Storage:	-20 °C
Storage Comment:	For short term use, store at 2-8°C up to 1 week. For long term storage, store at -20°C in small aliquots to prevent freeze-thaw cycles.



### Western Blotting

**Image 1.** WB Suggested Anti-TTMB Antibody Titration: 0.2-1 ug/ml ELISA Titer: 1:1562500 Positive Control: Human Placenta