

Datasheet for ABIN2781873
anti-LY6G6F antibody (N-Term)

2 Images

[Go to Product page](#)

Overview

Quantity:	100 µL
Target:	LY6G6F
Binding Specificity:	N-Term
Reactivity:	Human, Dog
Host:	Rabbit
Clonality:	Polyclonal
Conjugate:	This LY6G6F antibody is un-conjugated
Application:	Western Blotting (WB), Immunohistochemistry (IHC)

Product Details

Immunogen:	The immunogen is a synthetic peptide directed towards the N terminal region of human C6orf21
Sequence:	CSPAAGSFTT LVAQVQVGRP APDPGKPGRE SRLRLLGNYS LWLEGSKEED
Predicted Reactivity:	Dog: 85%, Human: 100%
Characteristics:	This is a rabbit polyclonal antibody against C6orf21. It was validated on Western Blot and immunohistochemistry.
Purification:	Protein A purified

Target Details

Target:	LY6G6F
---------	--------

Target Details

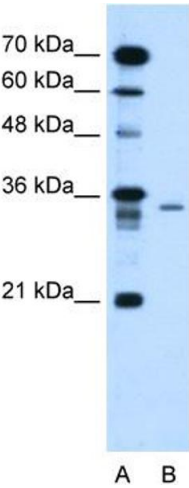
Alternative Name:	C6orf21 (LY6G6F Products)
Background:	The function remains unknown. Alias Symbols: G6f, LY6G6D, NG32, C6orf21 Protein Interaction Partner: GRB7, GRB2, Protein Size: 297
Molecular Weight:	32 kDa
Gene ID:	259215
NCBI Accession:	NM_001003693 , NP_001003693
UniProt:	Q7Z5H2

Application Details

Application Notes:	Optimal working dilutions should be determined experimentally by the investigator.
Comment:	Antigen size: 297 AA
Restrictions:	For Research Use only

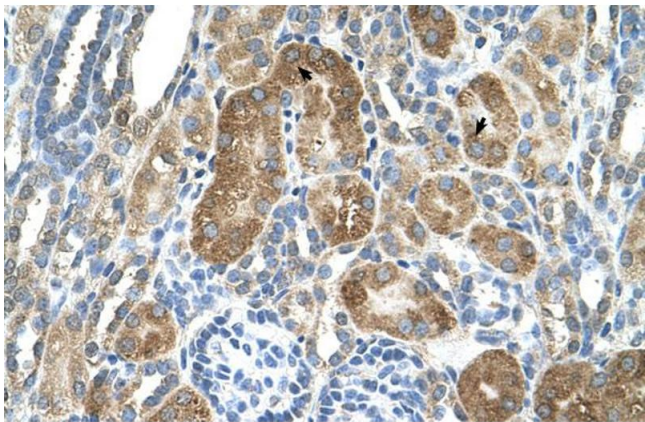
Handling

Format:	Liquid
Concentration:	Lot specific
Buffer:	Liquid. Purified antibody supplied in 1x PBS buffer with 0.09 % (w/v) sodium azide and 2 % sucrose.
Preservative:	Sodium azide
Precaution of Use:	This product contains Sodium azide: a POISONOUS AND HAZARDOUS SUBSTANCE which should be handled by trained staff only.
Handling Advice:	Avoid repeated freeze-thaw cycles.
Storage:	-20 °C
Storage Comment:	For short term use, store at 2-8°C up to 1 week. For long term storage, store at -20°C in small aliquots to prevent freeze-thaw cycles.



Western Blotting

Image 1. WB Suggested Anti-C6orf21 Antibody Titration:
1.25ug/ml Positive Control: HepG2 cell lysate



Immunohistochemistry

Image 2. Human kidney