

Datasheet for ABIN2781877
anti-KLHL31 antibody (C-Term)[Go to Product page](#)

2 Images

Overview

Quantity:	100 µL
Target:	KLHL31
Binding Specificity:	C-Term
Reactivity:	Mouse, Human, Dog, Rat, Horse, Cow, Pig, Rabbit, Zebrafish (Danio rerio)
Host:	Rabbit
Clonality:	Polyclonal
Conjugate:	This KLHL31 antibody is un-conjugated
Application:	Western Blotting (WB), Immunohistochemistry (IHC)

Product Details

Immunogen:	The immunogen is a synthetic peptide directed towards the C terminal region of human KLHL31
Sequence:	TPRGWHCAVT LSDRVYVMGG SQLGPRGERV DVLTVCEYSP ATGQWSYAAP
Predicted Reactivity:	Cow: 100%, Dog: 100%, Horse: 100%, Human: 100%, Mouse: 100%, Pig: 93%, Rabbit: 93%, Rat: 100%, Zebrafish: 93%
Characteristics:	This is a rabbit polyclonal antibody against KLHL31. It was validated on Western Blot and immunohistochemistry.
Purification:	Affinity Purified

Target Details

Target:	KLHL31
---------	--------

Target Details

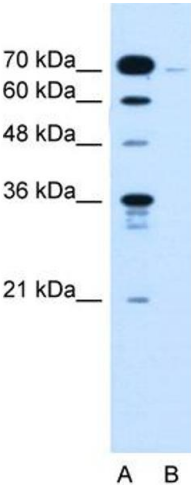
Alternative Name:	KLHL31 (KLHL31 Products)
Background:	The function remains unknown. Alias Symbols: BKLHD6, KLHL, bA345L23.2, KBTBD1 Protein Size: 634
Molecular Weight:	70 kDa
Gene ID:	401265
NCBI Accession:	NM_001003760 , NP_001003760
UniProt:	Q9H511

Application Details

Application Notes:	Optimal working dilutions should be determined experimentally by the investigator.
Comment:	Antigen size: 634 AA
Restrictions:	For Research Use only

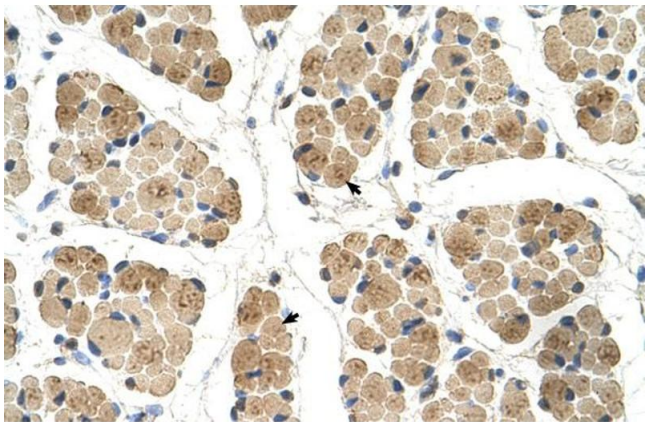
Handling

Format:	Liquid
Concentration:	Lot specific
Buffer:	Liquid. Purified antibody supplied in 1x PBS buffer with 0.09 % (w/v) sodium azide and 2 % sucrose.
Preservative:	Sodium azide
Precaution of Use:	This product contains Sodium azide: a POISONOUS AND HAZARDOUS SUBSTANCE which should be handled by trained staff only.
Handling Advice:	Avoid repeated freeze-thaw cycles.
Storage:	-20 °C
Storage Comment:	For short term use, store at 2-8°C up to 1 week. For long term storage, store at -20°C in small aliquots to prevent freeze-thaw cycles.



Western Blotting

Image 1. WB Suggested Anti-KLHL31 Antibody Titration:
0.2-1 ug/ml Positive Control: Jurkat cell lysate



Immunohistochemistry

Image 2. Human Muscle