

Datasheet for ABIN2781885

anti-UMODL1 antibody (Middle Region)[Go to Product page](#)**2** Images

Overview

| | |
|----------------------|---|
| Quantity: | 100 µL |
| Target: | UMODL1 |
| Binding Specificity: | Middle Region |
| Reactivity: | Human, Mouse, Horse, Guinea Pig, Pig, Rat, Cow, Dog |
| Host: | Rabbit |
| Clonality: | Polyclonal |
| Conjugate: | This UMODL1 antibody is un-conjugated |
| Application: | Western Blotting (WB) |

Product Details

| | |
|-----------------------|--|
| Immunogen: | The immunogen is a synthetic peptide directed towards the middle region of human UMODL1 |
| Sequence: | EMQLFIGDSP IPQNYSVSAS DDVRIEVGLY RQKSNLKVVL TECWATPSSN |
| Predicted Reactivity: | Cow: 93%, Dog: 93%, Guinea Pig: 83%, Horse: 86%, Human: 100%, Mouse: 86%, Pig: 93%, Rat: 93% |
| Characteristics: | This is a rabbit polyclonal antibody against UMODL1. It was validated on Western Blot. |
| Purification: | Affinity Purified |

Target Details

| | |
|-------------------|--|
| Target: | UMODL1 |
| Alternative Name: | UMODL1 (UMODL1 Products) |

Target Details

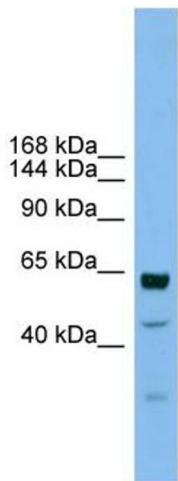
| | |
|-------------------|---|
| Background: | The function of this protein remains unknown. Alias Symbols: - Protein Size: 1318 |
| Molecular Weight: | 144 kDa |
| Gene ID: | 89766 |
| NCBI Accession: | NM_001004416 , NP_001004416 |
| UniProt: | Q5DID0 |

Application Details

| | |
|--------------------|--|
| Application Notes: | Optimal working dilutions should be determined experimentally by the investigator. |
| Comment: | Antigen size: 1318 AA |
| Restrictions: | For Research Use only |

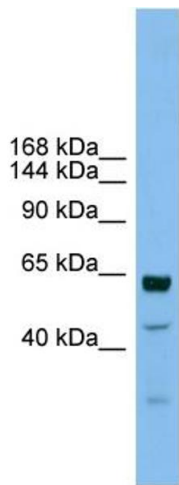
Handling

| | |
|--------------------|---|
| Format: | Liquid |
| Concentration: | Lot specific |
| Buffer: | Liquid. Purified antibody supplied in 1x PBS buffer with 0.09 % (w/v) sodium azide and 2 % sucrose. |
| Preservative: | Sodium azide |
| Precaution of Use: | This product contains Sodium azide: a POISONOUS AND HAZARDOUS SUBSTANCE which should be handled by trained staff only. |
| Handling Advice: | Avoid repeated freeze-thaw cycles. |
| Storage: | -20 °C |
| Storage Comment: | For short term use, store at 2-8°C up to 1 week. For long term storage, store at -20°C in small aliquots to prevent freeze-thaw cycles. |



Western Blotting

Image 1. WB Suggested Anti-UMODL1 Antibody Titration:
0.2-1 ug/ml Positive Control: HT1080 cell lysate



Rabbit Anti-UMODL1 Antibody
Catalog Number: ARP44475
Lot Number: QC14374
Lane: HT1080 Cell Lysate

Antibody Titration: 1.0µg/ml
Gel Concentration: 6-18%

Western Blotting

Image 2. WB Suggested Anti-UMODL1
Antibody Titration: 0.2-1 µg/mL
Positive Control: HT1080 cell lysate