



Datasheet for ABIN2781907
anti-ATP8B2 antibody (N-Term)



[Go to Product page](#)

2 Images

Overview

Quantity:	100 µL
Target:	ATP8B2
Binding Specificity:	N-Term
Reactivity:	Human, Mouse, Cow, Rabbit, Dog, Rat, Guinea Pig, Zebrafish (Danio rerio), Horse
Host:	Rabbit
Clonality:	Polyclonal
Conjugate:	This ATP8B2 antibody is un-conjugated
Application:	Western Blotting (WB)

Product Details

Immunogen:	The immunogen is a synthetic peptide directed towards the N terminal region of human ATP8B2
Sequence:	MAVCAKKRPP EEERRARAND REYNEKFQYA SNCIKTSKYN ILTFLPVNLF
Predicted Reactivity:	Cow: 100%, Dog: 100%, Guinea Pig: 100%, Horse: 100%, Human: 100%, Mouse: 100%, Rabbit: 100%, Rat: 100%, Zebrafish: 100%
Characteristics:	This is a rabbit polyclonal antibody against ATP8B2. It was validated on Western Blot using a cell lysate as a positive control.
Purification:	Affinity Purified

Target Details

Target:	ATP8B2
---------	--------

Target Details

Alternative Name:	ATP8B2 (ATP8B2 Products)
Background:	<p>The protein encoded by this gene belongs to the family of P-type cation transport ATPases, and to the subfamily of aminophospholipid-transporting ATPases. The aminophospholipid translocases transport phosphatidylserine and phosphatidylethanolamine from one side of a bilayer to another. Alternatively spliced transcript variants encoding different isoforms have been identified.</p> <p>Alias Symbols: ATPID, DKFZp434M0219, KIAA1137</p> <p>Protein Interaction Partner: UBC,</p> <p>Protein Size: 387</p>
Molecular Weight:	44 kDa
Gene ID:	57198
NCBI Accession:	NM_001005855 , NP_001005855
UniProt:	P98198

Application Details

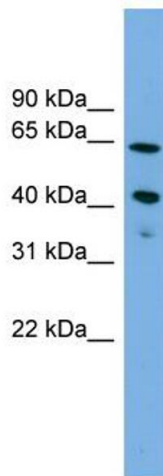
Application Notes:	Optimal working dilutions should be determined experimentally by the investigator.
Comment:	Antigen size: 387 AA
Restrictions:	For Research Use only

Handling

Format:	Liquid
Concentration:	Lot specific
Buffer:	Liquid. Purified antibody supplied in 1x PBS buffer with 0.09 % (w/v) sodium azide and 2 % sucrose.
Preservative:	Sodium azide
Precaution of Use:	This product contains Sodium azide: a POISONOUS AND HAZARDOUS SUBSTANCE which should be handled by trained staff only.
Handling Advice:	Avoid repeated freeze-thaw cycles.
Storage:	-20 °C
Storage Comment:	For short term use, store at 2-8°C up to 1 week. For long term storage, store at -20°C in small

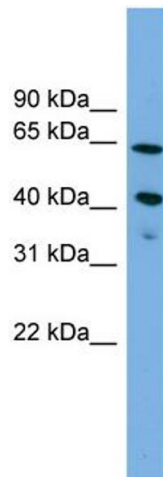
aliquots to prevent freeze-thaw cycles.

Images



Western Blotting

Image 1. WB Suggested Anti-ATP8B2 Antibody Titration: 0.2-1 $\mu\text{g/ml}$ Positive Control: Jurkat cell lysate ATP8B2 is supported by BioGPS gene expression data to be expressed in Jurkat



Western Blotting

Image 2. WB Suggested Anti-ATP8B2 Antibody Titration: 0.2-1 $\mu\text{g/ml}$ Positive Control: Jurkat cell lysate ATP8B2 is supported by BioGPS gene expression data to be expressed in Jurkat