

Datasheet for ABIN2781909
anti-WDR33 antibody (N-Term)[Go to Product page](#)

2 Images

Overview

Quantity:	100 µL
Target:	WDR33
Binding Specificity:	N-Term
Reactivity:	Human, Mouse, Rat, Rabbit, Cow, Guinea Pig, Horse, Dog, Zebrafish (Danio rerio)
Host:	Rabbit
Clonality:	Polyclonal
Conjugate:	This WDR33 antibody is un-conjugated
Application:	Western Blotting (WB)

Product Details

Immunogen:	The immunogen is a synthetic peptide directed towards the N terminal region of human WDR33
Sequence:	IWQRDQRDMR AIQPDAGYYN DLVPPIGMLN NPMNAVTTKF VRTSTNKKVC
Predicted Reactivity:	Cow: 100%, Dog: 100%, Guinea Pig: 100%, Horse: 100%, Human: 100%, Mouse: 100%, Rabbit: 100%, Rat: 100%, Zebrafish: 79%
Characteristics:	This is a rabbit polyclonal antibody against WDR33. It was validated on Western Blot.
Purification:	Affinity Purified

Target Details

Target:	WDR33
Alternative Name:	WDR33 (WDR33 Products)

Target Details

Background:	<p>WDR33 is a member of the WD repeat protein family. WD repeats are minimally conserved regions of approximately 40 amino acids typically bracketed by gly-his and trp-asp (GH-WD), which may facilitate formation of heterotrimeric or multiprotein complexes. Members of this family are involved in a variety of cellular processes, including cell cycle progression, signal transduction, apoptosis, and gene regulation. This gene is highly expressed in testis and the protein is localized to the nucleus. This gene may play important roles in the mechanisms of cytodifferentiation and/or DNA recombination.</p> <p>Alias Symbols: FLJ11294, WDC146, NET14</p> <p>Protein Interaction Partner: SUMO1, WWOX, RPA3, RPA2, RPA1, BMI1, CLK2, CDK6, DYRK4, HDAC11, UBC, CDK4, MDC1, BARD1, ZNF622, FIP1L1, CPSF2, CPSF3, CPSF1, MED17, ISG15, HNRNPA1, ELAVL1, SMARCAD1, RBM48, ZBTB16, EEF1G, ZHX1, KAT7, UTP14A, GIT1, SH3GL3, PRMT1, TP53, TGFB1, PFN2, RNPS1,</p> <p>Protein Size: 326</p>
Molecular Weight:	38 kDa
Gene ID:	55339
NCBI Accession:	NM_001006622 , NP_001006623
UniProt:	Q9NUL1

Application Details

Application Notes:	Optimal working dilutions should be determined experimentally by the investigator.
Comment:	Antigen size: 326 AA
Restrictions:	For Research Use only

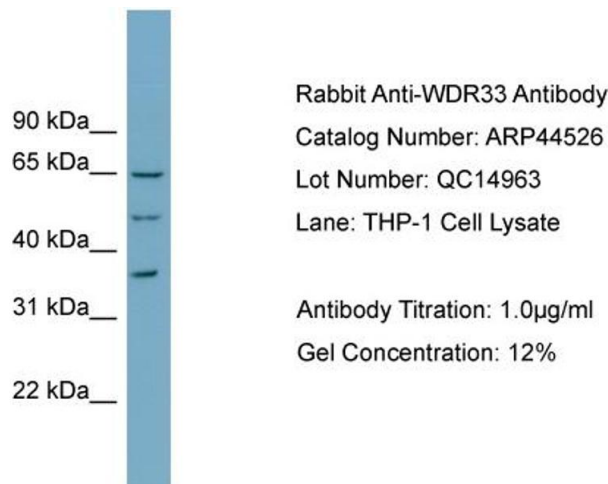
Handling

Format:	Liquid
Concentration:	Lot specific
Buffer:	Liquid. Purified antibody supplied in 1x PBS buffer with 0.09 % (w/v) sodium azide and 2 % sucrose.
Preservative:	Sodium azide
Precaution of Use:	This product contains Sodium azide: a POISONOUS AND HAZARDOUS SUBSTANCE which should be handled by trained staff only.

Handling

Handling Advice:	Avoid repeated freeze-thaw cycles.
Storage:	-20 °C
Storage Comment:	For short term use, store at 2-8°C up to 1 week. For long term storage, store at -20°C in small aliquots to prevent freeze-thaw cycles.

Images

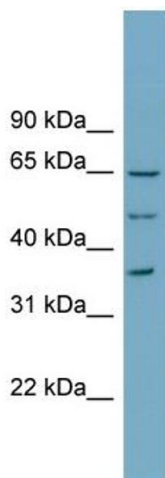


Western Blotting

Image 1. WB Suggested Anti-WDR33

Antibody Titration: 0.2-1 µg/mL

Positive Control: THP-1 cell lysate



Western Blotting

Image 2. WB Suggested Anti-WDR33 Antibody Titration: 0.2-

1 ug/ml Positive Control: THP-1 cell lysate