



Datasheet for ABIN2781915
anti-SDCBP antibody (Middle Region)



[Go to Product page](#)

2 Images

Overview

Quantity:	100 µL
Target:	SDCBP
Binding Specificity:	Middle Region
Reactivity:	Human, Rat, Mouse, Dog, Horse, Cow, Rabbit, Guinea Pig, Zebrafish (Danio rerio)
Host:	Rabbit
Clonality:	Polyclonal
Conjugate:	This SDCBP antibody is un-conjugated
Application:	Western Blotting (WB), Immunohistochemistry (IHC)

Product Details

Immunogen:	The immunogen is a synthetic peptide directed towards the middle region of human SDCBP
Sequence:	VGIRRAEIKQ GIREVILCKD QDGKIGLRLK SIDNGIFVQL VQANSPASLV
Predicted Reactivity:	Cow: 100%, Dog: 100%, Guinea Pig: 100%, Horse: 100%, Human: 100%, Mouse: 100%, Rabbit: 100%, Rat: 100%, Zebrafish: 92%
Characteristics:	This is a rabbit polyclonal antibody against SDCBP. It was validated on Western Blot and immunohistochemistry.
Purification:	Protein A purified

Target Details

Target:	SDCBP
---------	-------

Target Details

Alternative Name: [SDCBP \(SDCBP Products\)](#)

Background: SDCBP was initially identified as a molecule linking syndecan-mediated signaling to the cytoskeleton. The syntenin protein contains tandemly repeated PDZ domains that bind the cytoplasmic, C-terminal domains of a variety of transmembrane proteins. This protein may also affect cytoskeletal-membrane organization, cell adhesion, protein trafficking, and the activation of transcription factors. The protein is primarily localized to membrane-associated adherens junctions and focal adhesions but is also found at the endoplasmic reticulum and nucleus. The protein encoded by this gene was initially identified as a molecule linking syndecan-mediated signaling to the cytoskeleton. The syntenin protein contains tandemly repeated PDZ domains that bind the cytoplasmic, C-terminal domains of a variety of transmembrane proteins. This protein may also affect cytoskeletal-membrane organization, cell adhesion, protein trafficking, and the activation of transcription factors. The protein is primarily localized to membrane-associated adherens junctions and focal adhesions but is also found at the endoplasmic reticulum and nucleus. Alternative splicing results in multiple transcript variants encoding different isoforms.

Alias Symbols: MDA-9, ST1, SYCL, TACIP18

Protein Interaction Partner: WASL, SSNA1, CADPS, CGGBP1, ZBTB14, UBE2A, UBC, TRAF5, TFCP2, TDO2, FAM118B, DCTPP1, PYCRL, NADK, CDCP1, RIC8A, KLHL12, HOMEZ, TRIM54, EIF5A2, SEPT3, PRPF40A, NAGK, C11orf57, CEP55, ENOX1, FAM118A, THG1L, C1orf109, ZCCHC10, KCTD9, ROPN1, LZTFL1, NECAB2, P

Protein Size: 298

Molecular Weight: 32 kDa

Gene ID: 6386

NCBI Accession: [NM_001007067](#), [NP_001007068](#)

UniProt: [O00560](#)

Application Details

Application Notes: Optimal working dilutions should be determined experimentally by the investigator.

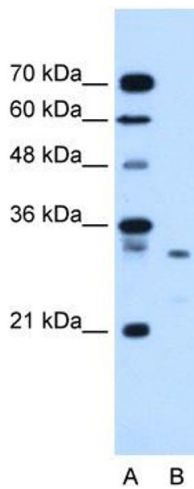
Comment: Antigen size: 298 AA

Restrictions: For Research Use only

Handling

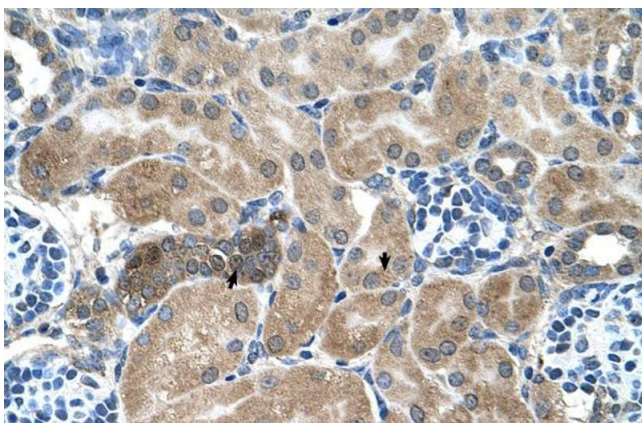
Format:	Liquid
Concentration:	Lot specific
Buffer:	Liquid. Purified antibody supplied in 1x PBS buffer with 0.09 % (w/v) sodium azide and 2 % sucrose.
Preservative:	Sodium azide
Precaution of Use:	This product contains Sodium azide: a POISONOUS AND HAZARDOUS SUBSTANCE which should be handled by trained staff only.
Handling Advice:	Avoid repeated freeze-thaw cycles.
Storage:	-20 °C
Storage Comment:	For short term use, store at 2-8°C up to 1 week. For long term storage, store at -20°C in small aliquots to prevent freeze-thaw cycles.

Images



Western Blotting

Image 1. WB Suggested Anti-SDCBP Antibody Titration:
1.25ug/ml Positive Control: HepG2 cell lysate



Immunohistochemistry

Image 2. Human kidney