

Datasheet for ABIN2781932

anti-Calsyntenin 1 antibody (N-Term)[Go to Product page](#)**1** Image

Overview

Quantity:	100 µL
Target:	Calsyntenin 1 (CLSTN1)
Binding Specificity:	N-Term
Reactivity:	Human, Mouse, Rat, Rabbit, Zebrafish (Danio rerio), Cow, Guinea Pig, Horse, Dog
Host:	Rabbit
Clonality:	Polyclonal
Conjugate:	This Calsyntenin 1 antibody is un-conjugated
Application:	Western Blotting (WB)

Product Details

Immunogen:	The immunogen is a synthetic peptide directed towards the N terminal region of human CLSTN1
Sequence:	KPWLEPTYHG IVTENDNTVL LDPPLIALDK DAPLRFAESF EVTVTKEGEI
Predicted Reactivity:	Cow: 82%, Dog: 92%, Guinea Pig: 100%, Horse: 100%, Human: 100%, Mouse: 100%, Rabbit: 100%, Rat: 100%, Zebrafish: 85%
Characteristics:	This is a rabbit polyclonal antibody against CLSTN1. It was validated on Western Blot using a cell lysate as a positive control.
Purification:	Affinity Purified

Target Details

Target:	Calsyntenin 1 (CLSTN1)
---------	------------------------

Target Details

Alternative Name:	CLSTN1 (CLSTN1 Products)
Background:	<p>CLSTN1 induces KLC1 association with vesicles and functions as a cargo in axonal anterograde transport. Complex formation with APBA2 and APP, CLSTN1 stabilizes APP metabolism and enhances APBA2-mediated suppression of beta-APP40 secretion, due to the retardation of intracellular APP maturation. In complex with APBA2 and C99, a C-terminal APP fragment, CLSTN1 abolishes C99 interaction with PSEN1 and thus APP C99 cleavage by gamma-secretase, most probably through stabilization of the direct interaction between APBA2 and APP. The intracellular fragment AICD suppresses APBB1-dependent transactivation stimulated by APP C-terminal intracellular fragment (AICD), most probably by competing with AICD for APBB1-binding. CLSTN1 may modulate calcium-mediated postsynaptic signals.</p> <p>Alias Symbols: CSTN1, FLJ32258, KIAA0911, PIK3CD, XB31alpha, alcalpha1, alcalpha2, CDHR12, ALC-ALPHA</p> <p>Protein Interaction Partner: MDM2, BAHCC1, SETDB1, SLK, TRIP12, MCM3AP, UBC, KLC2, CLSTN1, TOPBP1, APBA2, APBB1, KIF2A, KLC1, PRNP, COL17A1, PSEN1, APP,</p> <p>Protein Size: 981</p>
Molecular Weight:	110 kDa
Gene ID:	22883
NCBI Accession:	NM_001009566 , NP_001009566
UniProt:	O94985

Application Details

Application Notes:	Optimal working dilutions should be determined experimentally by the investigator.
Comment:	Antigen size: 981 AA
Restrictions:	For Research Use only

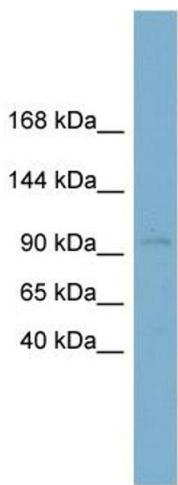
Handling

Format:	Liquid
Concentration:	Lot specific
Buffer:	Liquid. Purified antibody supplied in 1x PBS buffer with 0.09 % (w/v) sodium azide and 2 % sucrose.
Preservative:	Sodium azide

Handling

Precaution of Use:	This product contains Sodium azide: a POISONOUS AND HAZARDOUS SUBSTANCE which should be handled by trained staff only.
Handling Advice:	Avoid repeated freeze-thaw cycles.
Storage:	-20 °C
Storage Comment:	For short term use, store at 2-8°C up to 1 week. For long term storage, store at -20°C in small aliquots to prevent freeze-thaw cycles.

Images



Western Blotting

Image 1. WB Suggested Anti-CLSTN1 Antibody Titration: 0.2-1 ug/ml ELISA Titer: 1:312500 Positive Control: Human kidney