

Datasheet for ABIN2781938  
**anti-PTPLAD2 antibody (Middle Region)**[Go to Product page](#)

## 1 Image

## Overview

Quantity:	100 µL
Target:	PTPLAD2
Binding Specificity:	Middle Region
Reactivity:	Human, Mouse, Rat, Pig, Dog, Rabbit, Cow, Guinea Pig, Horse
Host:	Rabbit
Clonality:	Polyclonal
Conjugate:	This PTPLAD2 antibody is un-conjugated
Application:	Western Blotting (WB)

## Product Details

Immunogen:	The immunogen is a synthetic peptide directed towards the middle region of human PTPLAD2
Sequence:	LLHIYVGIES NHLLPRFLQL TERIIILFVW ITSQEEVQEK YVVCVLFVFW
Predicted Reactivity:	Cow: 93%, Dog: 100%, Guinea Pig: 93%, Horse: 93%, Human: 100%, Mouse: 92%, Pig: 100%, Rabbit: 100%, Rat: 93%
Characteristics:	This is a rabbit polyclonal antibody against PTPLAD2. It was validated on Western Blot using a cell lysate as a positive control.
Purification:	Affinity Purified

## Target Details

Target:	PTPLAD2
---------	---------

## Target Details

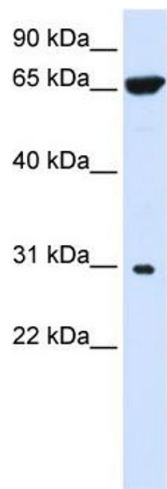
Alternative Name:	PTPLAD2 ( <a href="#">PTPLAD2 Products</a> )
Background:	<p>PTPLAD2 is a multi-pass membrane protein. It belongs to the PTPLA family. The function of the PTPLAD2 protein remains unknown.</p> <p>Alias Symbols: DKFZp686F01145, DKFZp686G24132, HACD4</p> <p>Protein Size: 232</p>
Molecular Weight:	27 kDa
Gene ID:	401494
NCBI Accession:	<a href="#">NM_001010915</a> , <a href="#">NP_001010915</a>
UniProt:	<a href="#">Q5VWC8</a>

## Application Details

Application Notes:	Optimal working dilutions should be determined experimentally by the investigator.
Comment:	Antigen size: 232 AA
Restrictions:	For Research Use only

## Handling

Format:	Liquid
Concentration:	Lot specific
Buffer:	Liquid. Purified antibody supplied in 1x PBS buffer with 0.09 % (w/v) sodium azide and 2 % sucrose.
Preservative:	Sodium azide
Precaution of Use:	This product contains Sodium azide: a POISONOUS AND HAZARDOUS SUBSTANCE which should be handled by trained staff only.
Handling Advice:	Avoid repeated freeze-thaw cycles.
Storage:	-20 °C
Storage Comment:	For short term use, store at 2-8°C up to 1 week. For long term storage, store at -20°C in small aliquots to prevent freeze-thaw cycles.



**Western Blotting**

**Image 1.** WB Suggested Anti-PTPLAD2 Antibody Titration:  
0.2-1 ug/ml ELISA Titer: 1:1562500 Positive Control: 293T cell lysate