



Datasheet for ABIN2781943
anti-ATP11C antibody (C-Term)



[Go to Product page](#)

1 Image

Overview

Quantity:	100 µL
Target:	ATP11C
Binding Specificity:	C-Term
Reactivity:	Human, Mouse, Cow, Dog, Guinea Pig, Rabbit, Rat, Horse
Host:	Rabbit
Clonality:	Polyclonal
Conjugate:	This ATP11C antibody is un-conjugated
Application:	Western Blotting (WB)

Product Details

Immunogen:	The immunogen is a synthetic peptide corresponding to a region of Mouse
Sequence:	GLKVVWLTGD KMETAKSTCY ACRLFQTNTE LLELTTKTIE ESERKEDRLH
Predicted Reactivity:	Cow: 100%, Dog: 100%, Guinea Pig: 100%, Horse: 93%, Human: 100%, Mouse: 100%, Rabbit: 100%, Rat: 100%
Characteristics:	This is a rabbit polyclonal antibody against Atp11c. It was validated on Western Blot.
Purification:	Affinity Purified

Target Details

Target:	ATP11C
Alternative Name:	Atp11c (ATP11C Products)

Target Details

Background: The function of Atp11c remains unknown.
Alias Symbols: A330005H02Rik, AI315324, Ig, MGC117487
Protein Size: 1129

Molecular Weight: 129 kDa

Gene ID: 320940

NCBI Accession: [NM_001037863](#), [NP_001032952](#)

UniProt: [Q9QZW0](#)

Application Details

Application Notes: Optimal working dilutions should be determined experimentally by the investigator.

Comment: Antigen size: 1129 AA

Restrictions: For Research Use only

Handling

Format: Liquid

Concentration: Lot specific

Buffer: Liquid. Purified antibody supplied in 1x PBS buffer with 0.09 % (w/v) sodium azide and 2 % sucrose.

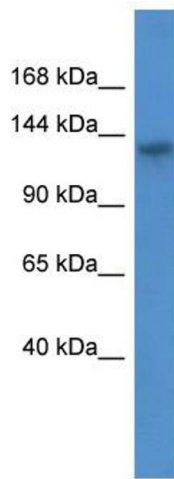
Preservative: Sodium azide

Precaution of Use: This product contains Sodium azide: a POISONOUS AND HAZARDOUS SUBSTANCE which should be handled by trained staff only.

Handling Advice: Avoid repeated freeze-thaw cycles.

Storage: -20 °C

Storage Comment: For short term use, store at 2-8°C up to 1 week. For long term storage, store at -20°C in small aliquots to prevent freeze-thaw cycles.



Western Blotting

Image 1. WB Suggested Anti-Atp11c Antibody Titration:
0.2-1 ug/ml ELISA Titer: 1:62500 Positive Control: Mouse
Brain