

Datasheet for ABIN2781944  
**anti-C1GALT1C1 antibody (N-Term)**[Go to Product page](#)

## 1 Image

## Overview

Quantity:	100 µL
Target:	C1GALT1C1
Binding Specificity:	N-Term
Reactivity:	Human, Mouse, Rat, Cow, Dog, Guinea Pig, Horse, Rabbit
Host:	Rabbit
Clonality:	Polyclonal
Conjugate:	This C1GALT1C1 antibody is un-conjugated
Application:	Western Blotting (WB)

## Product Details

Immunogen:	The immunogen is a synthetic peptide directed towards the N-terminal region of Rat C1galt1c1
Sequence:	SFQVYCVILV KPKDVSLWAA VKETWTKHCD KAEFFSSENV KVFESINMDT
Predicted Reactivity:	Cow: 100%, Dog: 100%, Guinea Pig: 93%, Horse: 100%, Human: 100%, Mouse: 100%, Rabbit: 100%, Rat: 100%
Characteristics:	This is a rabbit polyclonal antibody against C1galt1c1. It was validated on Western Blot.
Purification:	Affinity Purified

## Target Details

Target:	C1GALT1C1
Alternative Name:	C1galt1c1 ( <a href="#">C1GALT1C1 Products</a> )

## Target Details

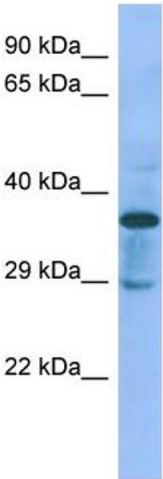
Background:	<p>C1galt1c1 is a probable chaperone required for the generation of 1 O-glycan Gal-beta1-3GalNAc-alpha1-Ser/Thr (T antigen), which is a precursor for many extended O-glycans in glycoproteins. It probably acts as a specific molecular chaperone assisting the folding/stability of core 1 beta-3-galactosyltransferase (C1GALT1).</p> <p>Alias Symbols: RGD1311230</p> <p>Protein Size: 316</p>
Molecular Weight:	34 kDa
Gene ID:	302499
NCBI Accession:	<a href="#">NM_001030033</a> , <a href="#">NP_001025204</a>
UniProt:	<a href="#">Q499P3</a>

## Application Details

Application Notes:	Optimal working dilutions should be determined experimentally by the investigator.
Comment:	Antigen size: 316 AA
Restrictions:	For Research Use only

## Handling

Format:	Liquid
Concentration:	Lot specific
Buffer:	Liquid. Purified antibody supplied in 1x PBS buffer with 0.09 % (w/v) sodium azide and 2 % sucrose.
Preservative:	Sodium azide
Precaution of Use:	This product contains Sodium azide: a POISONOUS AND HAZARDOUS SUBSTANCE which should be handled by trained staff only.
Handling Advice:	Avoid repeated freeze-thaw cycles.
Storage:	-20 °C
Storage Comment:	For short term use, store at 2-8°C up to 1 week. For long term storage, store at -20°C in small aliquots to prevent freeze-thaw cycles.



Western Blotting

**Image 1.** Host: Rabbit Target Name: C1galt1c1 Sample Type: Rat pancreas lysates Antibody Dilution: 1.0ug/ml