

Datasheet for ABIN2781950
anti-AGPAT2 antibody (C-Term)[Go to Product page](#)

3 Images

Overview

| | |
|----------------------|---|
| Quantity: | 100 µL |
| Target: | AGPAT2 |
| Binding Specificity: | C-Term |
| Reactivity: | Human, Saccharomyces cerevisiae, Cow, Dog, Horse |
| Host: | Rabbit |
| Clonality: | Polyclonal |
| Conjugate: | This AGPAT2 antibody is un-conjugated |
| Application: | Western Blotting (WB), Immunohistochemistry (IHC) |

Product Details

| | |
|-----------------------|--|
| Sequence: | QVPIVPVWYS SFSSFYNTKK KFFTSGTVTV QVLEAIP TSG LTAADV PALV |
| Predicted Reactivity: | Cow: 85%, Dog: 92%, Horse: 77%, Human: 100%, Yeast: 91% |
| Characteristics: | This is a rabbit polyclonal antibody against AGPAT2. It was validated on Western Blot. |
| Purification: | Affinity Purified |

Target Details

| | |
|-------------------|---|
| Target: | AGPAT2 |
| Alternative Name: | AGPAT2 (AGPAT2 Products) |
| Background: | AGPAT2 is a member of the 1-acylglycerol-3-phosphate O-acyltransferase family. The protein is located within the endoplasmic reticulum membrane and converts lysophosphatidic acid to |

Target Details

phosphatidic acid, the second step in de novo phospholipid biosynthesis. Mutations in its gene have been associated with congenital generalized lipodystrophy (CGL), or Berardinelli-Seip syndrome, a disease characterized by a near absence of adipose tissue and severe insulin resistance.

Alias Symbols: 1-AGPAT2, BSCL, BSCL1, LPAAB, LPAAT-beta

Protein Interaction Partner: ABCG8, PHRF1, PHF11, ANKRD28, SLC23A2, GMPS, UBC,

Protein Size: 278

Molecular Weight: 31 kDa

Gene ID: 10555

NCBI Accession: [NM_006412](#), [NP_006403](#)

UniProt: [O15120](#)

Application Details

Application Notes: Optimal working dilutions should be determined experimentally by the investigator.

Comment: Antigen size: 278 AA

Restrictions: For Research Use only

Handling

Format: Liquid

Concentration: Lot specific

Buffer: Liquid. Purified antibody supplied in 1x PBS buffer with 0.09 % (w/v) sodium azide and 2 % sucrose.

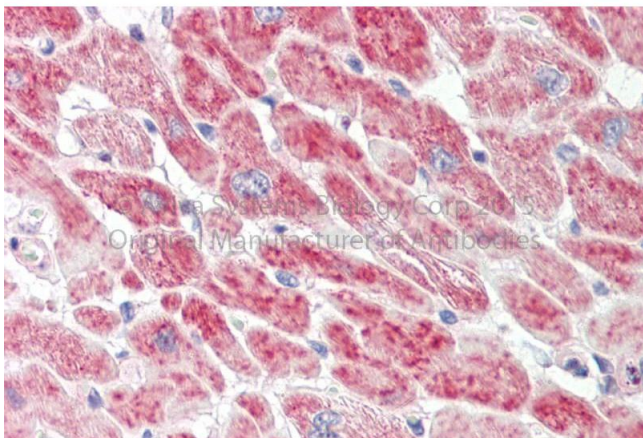
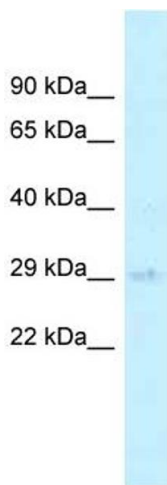
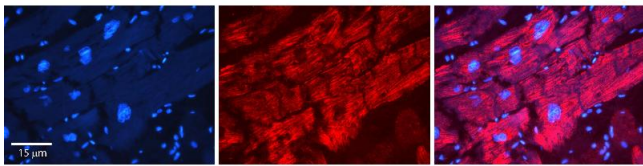
Preservative: Sodium azide

Precaution of Use: This product contains Sodium azide: a POISONOUS AND HAZARDOUS SUBSTANCE which should be handled by trained staff only.

Handling Advice: Avoid repeated freeze-thaw cycles.

Storage: -20 °C

Storage Comment: For short term use, store at 2-8°C up to 1 week. For long term storage, store at -20°C in small aliquots to prevent freeze-thaw cycles.



Immunohistochemistry

Image 1. Rabbit Anti-AGPAT2 Antibody Catalog Number: ARP44636_P050 Formalin Fixed Paraffin Embedded Tissue: Human heart Tissue Observed Staining: Cytoplasmic Primary Antibody Concentration: N/A Other Working Concentrations: 1:600 Secondary Antibody: Donkey anti-Rabbit-Cy3 Secondary Antibody Concentration: 1:200 Magnification: 20X Exposure Time: 0.5 - 2.0 sec

Western Blotting

Image 2. WB Suggested Anti-AGPAT2 Antibody Titration: 1.0 ug/ml Positive Control: 721_B Whole Cell

Immunohistochemistry

Image 3. Rabbit Anti-AGPAT2 antibody Catalog Number: ARP44636 Formalin Fixed Paraffin Embedded Tissue: Human Adult Heart Observed Staining: Cytoplasm in hepatocytes Primary Antibody Concentration: 1:600 Secondary Antibody: Donkey anti-Rabbit-Cy3 Secondary Antibody Concentration: 1:200 Magnification: 20X Exposure Time: 0.5 - 2.0 sec