

Datasheet for ABIN2781955
anti-CXorf66 antibody (Middle Region)[Go to Product page](#)

1 Image

Overview

Quantity:	100 µL
Target:	CXorf66
Binding Specificity:	Middle Region
Reactivity:	Human
Host:	Rabbit
Clonality:	Polyclonal
Conjugate:	This CXorf66 antibody is un-conjugated
Application:	Western Blotting (WB)

Product Details

Immunogen:	The immunogen is a synthetic peptide directed towards the middle region of human CXorf66
Sequence:	PETQPMLSTA DKSSDSSSPE RASAQSSTEK LIRPSSLQKP SIPNSAGKLT
Predicted Reactivity:	Human: 100%
Characteristics:	This is a rabbit polyclonal antibody against RP11-35F15.2. It was validated on Western Blot using a cell lysate as a positive control.
Purification:	Affinity Purified

Target Details

Target:	CXorf66
Alternative Name:	CXorf66 (CXorf66 Products)

Target Details

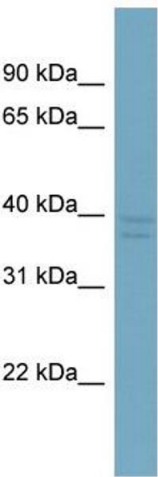
Background:	The protein encoded by this gene is predicted to be a type I membrane protein, however, its exact function is not known. Alias Symbols: LOC347487 Protein Size: 361
Molecular Weight:	40 kDa
Gene ID:	347487
NCBI Accession:	NM_001013403 , NP_001013421
UniProt:	Q5JRM2

Application Details

Application Notes:	Optimal working dilutions should be determined experimentally by the investigator.
Comment:	Antigen size: 361 AA
Restrictions:	For Research Use only

Handling

Format:	Liquid
Concentration:	Lot specific
Buffer:	Liquid. Purified antibody supplied in 1x PBS buffer with 0.09 % (w/v) sodium azide and 2 % sucrose.
Preservative:	Sodium azide
Precaution of Use:	This product contains Sodium azide: a POISONOUS AND HAZARDOUS SUBSTANCE which should be handled by trained staff only.
Handling Advice:	Avoid repeated freeze-thaw cycles.
Storage:	-20 °C
Storage Comment:	For short term use, store at 2-8°C up to 1 week. For long term storage, store at -20°C in small aliquots to prevent freeze-thaw cycles.



Western Blotting

Image 1. WB Suggested Anti-CXorf66 Antibody Titration:
0.2-1 ug/ml Positive Control: ACHN cell lysate