

Datasheet for ABIN2781963
anti-LRRC26 antibody (Middle Region)[Go to Product page](#)

1 Image

Overview

Quantity:	100 µL
Target:	LRRC26
Binding Specificity:	Middle Region
Reactivity:	Human, Dog, Cow, Guinea Pig, Horse
Host:	Rabbit
Clonality:	Polyclonal
Conjugate:	This LRRC26 antibody is un-conjugated
Application:	Western Blotting (WB)

Product Details

Immunogen:	The immunogen is a synthetic peptide directed towards the middle region of human LRRC26
Sequence:	LRPLCAWLRR HPLPASEAET VLCVWPGRLT LSPLTAFSDA AFSHCAQPLA
Predicted Reactivity:	Cow: 93%, Dog: 100%, Guinea Pig: 77%, Horse: 83%, Human: 100%
Characteristics:	This is a rabbit polyclonal antibody against LRRC26. It was validated on Western Blot using a cell lysate as a positive control.
Purification:	Affinity Purified

Target Details

Target:	LRRC26
Alternative Name:	LRRC26 (LRRC26 Products)

Target Details

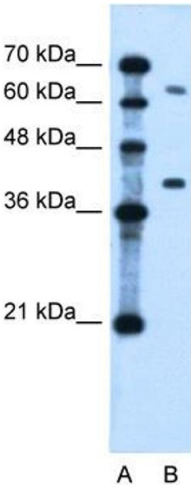
Background:	The function remains unknown. Alias Symbols: bA350O14.10, CAPC Protein Size: 334
Molecular Weight:	37 kDa
Gene ID:	389816
NCBI Accession:	NM_001013653 , NP_001013675
UniProt:	Q2I0M4

Application Details

Application Notes:	Optimal working dilutions should be determined experimentally by the investigator.
Comment:	Antigen size: 334 AA
Restrictions:	For Research Use only

Handling

Format:	Liquid
Concentration:	Lot specific
Buffer:	Liquid. Purified antibody supplied in 1x PBS buffer with 0.09 % (w/v) sodium azide and 2 % sucrose.
Preservative:	Sodium azide
Precaution of Use:	This product contains Sodium azide: a POISONOUS AND HAZARDOUS SUBSTANCE which should be handled by trained staff only.
Handling Advice:	Avoid repeated freeze-thaw cycles.
Storage:	-20 °C
Storage Comment:	For short term use, store at 2-8°C up to 1 week. For long term storage, store at -20°C in small aliquots to prevent freeze-thaw cycles.



Western Blotting

Image 1. WB Suggested Anti-LRRC26 Antibody Titration:
0.2-1 ug/ml Positive Control: Jurkat cell lysate