

Datasheet for ABIN2781972
anti-GLTPD2 antibody (Middle Region)



[Go to Product page](#)

1 Image

Overview

Quantity:	100 µL
Target:	GLTPD2
Binding Specificity:	Middle Region
Reactivity:	Human
Host:	Rabbit
Clonality:	Polyclonal
Conjugate:	This GLTPD2 antibody is un-conjugated
Application:	Western Blotting (WB)

Product Details

Immunogen:	The immunogen is a synthetic peptide directed towards the middle region of human LOC388323
Sequence:	LAAMAAWERR AGLLEQPGAA PRDPTRSSGS RTLLLLHRAL RWSQLCLHRV
Predicted Reactivity:	Human: 100%
Characteristics:	This is a rabbit polyclonal antibody against LOC388323. It was validated on Western Blot using a cell lysate as a positive control.
Purification:	Protein A purified

Target Details

Target:	GLTPD2
---------	--------

Target Details

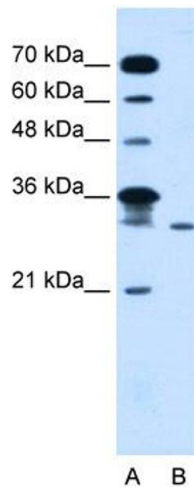
Alternative Name:	GLTPD2 (GLTPD2 Products)
Background:	The function remains unknown. Protein Interaction Partner: PRDX4, Protein Size: 291
Molecular Weight:	32 kDa
Gene ID:	388323
NCBI Accession:	NM_001014985 , NP_001014985
UniProt:	A6NH11

Application Details

Application Notes:	Optimal working dilutions should be determined experimentally by the investigator.
Comment:	Antigen size: 291 AA
Restrictions:	For Research Use only

Handling

Format:	Liquid
Concentration:	Lot specific
Buffer:	Liquid. Purified antibody supplied in 1x PBS buffer with 0.09 % (w/v) sodium azide and 2 % sucrose.
Preservative:	Sodium azide
Precaution of Use:	This product contains Sodium azide: a POISONOUS AND HAZARDOUS SUBSTANCE which should be handled by trained staff only.
Handling Advice:	Avoid repeated freeze-thaw cycles.
Storage:	-20 °C
Storage Comment:	For short term use, store at 2-8°C up to 1 week. For long term storage, store at -20°C in small aliquots to prevent freeze-thaw cycles.



Western Blotting

Image 1. WB Suggested Anti-GLTPD2 Antibody Titration:
5.0ug/ml Positive Control: Jurkat cell lysate