



Datasheet for ABIN2781989
anti-VMA21 antibody (N-Term)



[Go to Product page](#)

2 Images

Overview

Quantity:	100 µL
Target:	VMA21
Binding Specificity:	N-Term
Reactivity:	Human, Mouse, Rat, Dog, Rabbit, Cow, Pig
Host:	Rabbit
Clonality:	Polyclonal
Conjugate:	This VMA21 antibody is un-conjugated
Application:	Western Blotting (WB), Immunohistochemistry (IHC)

Product Details

Immunogen:	The immunogen is a synthetic peptide directed towards the N terminal region of human LOC203547
Sequence:	MERPDKAALN ALQPPEFRNE SSLASTLKTL LFFTALMITV PIGLYFTTKS
Predicted Reactivity:	Cow: 92%, Dog: 86%, Human: 100%, Mouse: 93%, Pig: 92%, Rabbit: 93%, Rat: 93%
Characteristics:	This is a rabbit polyclonal antibody against LOC203547. It was validated on Western Blot and immunohistochemistry.
Purification:	Protein A purified

Target Details

Target:	VMA21
---------	-------

Target Details

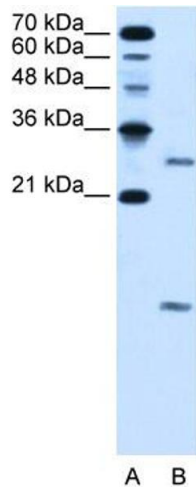
Alternative Name:	VMA21 (VMA21 Products)
Background:	The function remains unknown. Alias Symbols: MEAX, XMEA Protein Interaction Partner: K3, TMEM9, COA7, SCAF4, NPTN, SEPT9, PLIN3, SELENBP1, PLAUR, OXCT1, ECE1, ELAVL1, UBC, Protein Size: 101
Molecular Weight:	11 kDa
Gene ID:	203547
NCBI Accession:	NM_001017980 , NP_001017980
UniProt:	Q3ZAQ7

Application Details

Application Notes:	Optimal working dilutions should be determined experimentally by the investigator.
Comment:	Antigen size: 101 AA
Restrictions:	For Research Use only

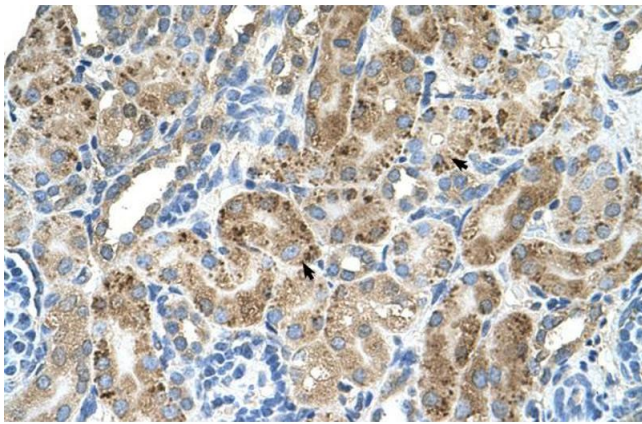
Handling

Format:	Liquid
Concentration:	Lot specific
Buffer:	Liquid. Purified antibody supplied in 1x PBS buffer with 0.09 % (w/v) sodium azide and 2 % sucrose.
Preservative:	Sodium azide
Precaution of Use:	This product contains Sodium azide: a POISONOUS AND HAZARDOUS SUBSTANCE which should be handled by trained staff only.
Handling Advice:	Avoid repeated freeze-thaw cycles.
Storage:	-20 °C
Storage Comment:	For short term use, store at 2-8°C up to 1 week. For long term storage, store at -20°C in small aliquots to prevent freeze-thaw cycles.



Western Blotting

Image 1. WB Suggested Anti-VMA21 Antibody Titration:
5.0ug/ml Positive Control: HepG2 cell lysate



Immunohistochemistry

Image 2. Human kidney