

Datasheet for ABIN2781990
anti-LRP8 antibody (Middle Region)

2 Images

[Go to Product page](#)

Overview

Quantity:	100 µL
Target:	LRP8
Binding Specificity:	Middle Region
Reactivity:	Human, Mouse, Rat, Dog, Guinea Pig, Horse, Rabbit, Sheep, Zebrafish (Danio rerio), Cow
Host:	Rabbit
Clonality:	Polyclonal
Conjugate:	This LRP8 antibody is un-conjugated
Application:	Western Blotting (WB), Immunohistochemistry (IHC)

Product Details

Immunogen:	The immunogen is a synthetic peptide directed towards the middle region of human LRP8
Sequence:	ATVDGGRRRT LFSRNLSEPR AIAVDPLRGF MYWSDWGDQA KIEKSGLNGV
Predicted Reactivity:	Cow: 93%, Dog: 100%, Guinea Pig: 100%, Horse: 93%, Human: 100%, Mouse: 100%, Rabbit: 100%, Rat: 100%, Sheep: 100%, Zebrafish: 85%
Characteristics:	This is a rabbit polyclonal antibody against LRP8. It was validated on Western Blot using a cell lysate as a positive control.
Purification:	Affinity Purified

Target Details

Target:	LRP8
---------	------

Target Details

Alternative Name:	LRP8 (LRP8 Products)
Background:	<p>LRP8 is an apolipoprotein E receptor, a member of the low density lipoprotein receptor (LDLR) family. Apolipoprotein E is a small lipophilic plasma protein and a component of lipoproteins such as chylomicron remnants, very low density lipoprotein (VLDL), and high density lipoprotein (HDL). The apolipoprotein E receptor is involved in cellular recognition and internalization of these lipoproteins. This gene encodes an apolipoprotein E receptor, a member of the low density lipoprotein receptor (LDLR) family. Apolipoprotein E is a small lipophilic plasma protein and a component of lipoproteins such as chylomicron remnants, very low density lipoprotein (VLDL), and high density lipoprotein (HDL). The apolipoprotein E receptor is involved in cellular recognition and internalization of these lipoproteins. Alternative splicing generates multiple transcript variants encoding distinct isoforms for this gene.</p> <p>Alias Symbols: APOER2, HSZ75190, MCI1, LRP-8</p> <p>Protein Interaction Partner: UBC, MYLIP, RELN, APOE, GRIN1, SNX17, DAB1, DLG4, CLU, APOH, LRPAP1, SYNJ2BP, MAPK8IP2, GIPC1, ANAPC10, NOS1AP, MAPK8IP1, ITGB1BP1, SCN3A, APBA2,</p> <p>Protein Size: 700</p>
Molecular Weight:	74 kDa
Gene ID:	7804
NCBI Accession:	NM_017522 , NP_059992
UniProt:	B1AMT8

Application Details

Application Notes:	Optimal working dilutions should be determined experimentally by the investigator.
Comment:	Antigen size: 700 AA
Restrictions:	For Research Use only

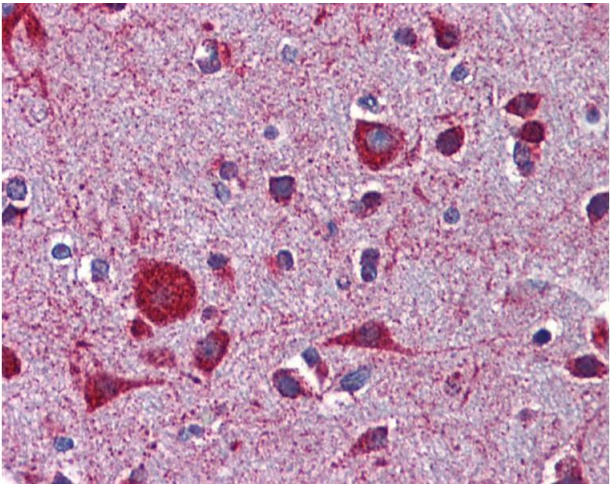
Handling

Format:	Liquid
Concentration:	Lot specific
Buffer:	Liquid. Purified antibody supplied in 1x PBS buffer with 0.09 % (w/v) sodium azide and 2 % sucrose.

Handling

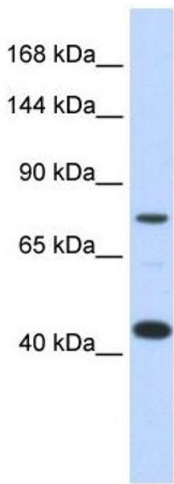
Preservative:	Sodium azide
Precaution of Use:	This product contains Sodium azide: a POISONOUS AND HAZARDOUS SUBSTANCE which should be handled by trained staff only.
Handling Advice:	Avoid repeated freeze-thaw cycles.
Storage:	-20 °C
Storage Comment:	For short term use, store at 2-8°C up to 1 week. For long term storage, store at -20°C in small aliquots to prevent freeze-thaw cycles.

Validation report #100008 for Western Blotting (WB)



Immunohistochemistry

Image 1.



Western Blotting

Image 2. WB Suggested Anti-LRP8 Antibody Titration: 0.2-1 ug/ml ELISA Titer: 1:1562500 Positive Control: Transfected 293T