

Datasheet for ABIN2781995

anti-LRRC66 antibody (Middle Region)[Go to Product page](#)**1** Image

Overview

Quantity:	100 µL
Target:	LRRC66
Binding Specificity:	Middle Region
Reactivity:	Human
Host:	Rabbit
Clonality:	Polyclonal
Conjugate:	This LRRC66 antibody is un-conjugated
Application:	Western Blotting (WB)

Product Details

Immunogen:	The immunogen is a synthetic peptide directed towards the middle region of human LRRC66
Sequence:	NVTFQTIPGK CKNQEDPF EK PLISAPDSGM YKTHLENASD TDRSEGLSPW
Predicted Reactivity:	Human: 100%
Characteristics:	This is a rabbit polyclonal antibody against LOC339977. It was validated on Western Blot using a cell lysate as a positive control.
Purification:	Affinity Purified

Target Details

Target:	LRRC66
Alternative Name:	LRRC66 (LRRC66 Products)

Target Details

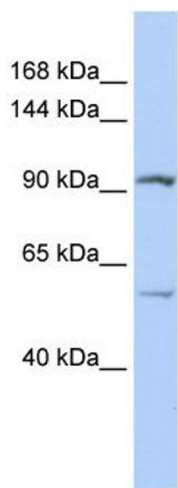
Background:	The exact function of LOC339977 remains unknown. Protein Size: 880
Molecular Weight:	98 kDa
Gene ID:	339977
NCBI Accession:	NM_001024611 , NP_001019782
UniProt:	Q68CR7

Application Details

Application Notes:	Optimal working dilutions should be determined experimentally by the investigator.
Comment:	Antigen size: 880 AA
Restrictions:	For Research Use only

Handling

Format:	Liquid
Concentration:	Lot specific
Buffer:	Liquid. Purified antibody supplied in 1x PBS buffer with 0.09 % (w/v) sodium azide and 2 % sucrose.
Preservative:	Sodium azide
Precaution of Use:	This product contains Sodium azide: a POISONOUS AND HAZARDOUS SUBSTANCE which should be handled by trained staff only.
Handling Advice:	Avoid repeated freeze-thaw cycles.
Storage:	-20 °C
Storage Comment:	For short term use, store at 2-8°C up to 1 week. For long term storage, store at -20°C in small aliquots to prevent freeze-thaw cycles.



Western Blotting

Image 1. WB Suggested Anti-LRRC66 Antibody Titration:
0.2-1 ug/ml ELISA Titer: 1:312500 Positive Control: Jurkat
cell lysate