

Datasheet for ABIN2781996
anti-LETMD1 antibody (Middle Region)

3 Images

[Go to Product page](#)

Overview

Quantity:	100 µL
Target:	LETMD1
Binding Specificity:	Middle Region
Reactivity:	Human, Mouse, Rat, Guinea Pig, Horse, Cow, Dog, Rabbit
Host:	Rabbit
Clonality:	Polyclonal
Conjugate:	This LETMD1 antibody is un-conjugated
Application:	Western Blotting (WB)

Product Details

Immunogen:	The immunogen is a synthetic peptide directed towards the middle region of human LETMD1
Sequence:	LLRHRLKTHT TVIHQLDKAL AKLGIGQLTA QEVKSACYLR GLNSTHIGED
Predicted Reactivity:	Cow: 93%, Dog: 86%, Guinea Pig: 100%, Horse: 100%, Human: 100%, Mouse: 100%, Rabbit: 86%, Rat: 92%
Characteristics:	This is a rabbit polyclonal antibody against LETMD1. It was validated on Western Blot using a cell lysate as a positive control.
Purification:	Affinity Purified

Target Details

Target:	LETMD1
---------	--------

Target Details

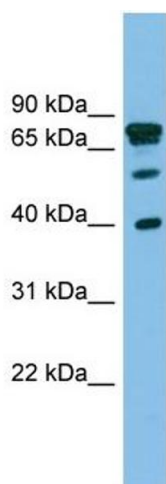
Alternative Name:	LETMD1 (LETMD1 Products)
Background:	<p>LETMD1 is involved in tumorigenesis and may function as a negative regulator of the TP53/p53.</p> <p>Alias Symbols: 1110019013Rik, DKFZp586A011, HCCR-2, HCCR1, HCCR-1, HCRR-2</p> <p>Protein Interaction Partner: UBC, APP,</p> <p>Protein Size: 304</p>
Molecular Weight:	36 kDa
Gene ID:	25875
NCBI Accession:	NM_001024668 , NP_001019839

Application Details

Application Notes:	Optimal working dilutions should be determined experimentally by the investigator.
Comment:	Antigen size: 304 AA
Restrictions:	For Research Use only

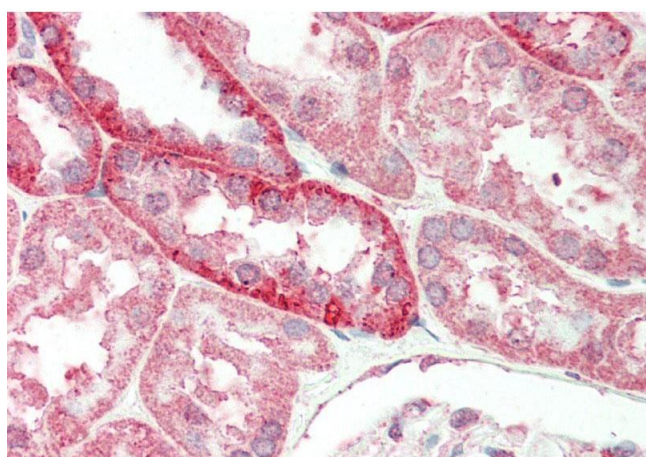
Handling

Format:	Liquid
Concentration:	Lot specific
Buffer:	Liquid. Purified antibody supplied in 1x PBS buffer with 0.09 % (w/v) sodium azide and 2 % sucrose.
Preservative:	Sodium azide
Precaution of Use:	This product contains Sodium azide: a POISONOUS AND HAZARDOUS SUBSTANCE which should be handled by trained staff only.
Handling Advice:	Avoid repeated freeze-thaw cycles.
Storage:	-20 °C
Storage Comment:	For short term use, store at 2-8°C up to 1 week. For long term storage, store at -20°C in small aliquots to prevent freeze-thaw cycles.



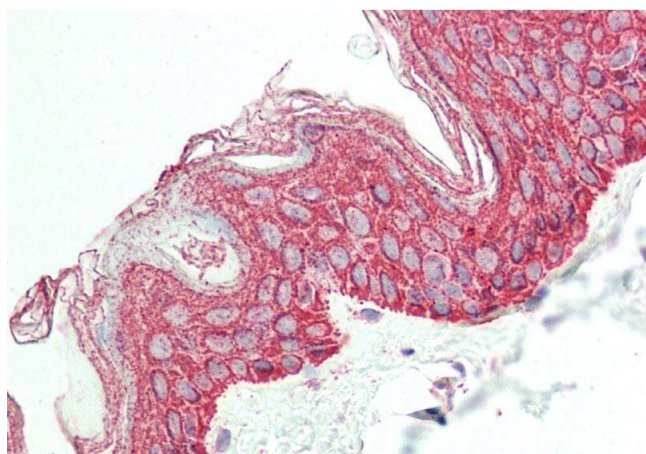
Western Blotting

Image 1. WB Suggested Anti-LETMD1 Antibody Titration: 0.2-1 ug/ml ELISA Titer: 1:312500 Positive Control: PANC1 cell lysate



Immunohistochemistry

Image 2. Rabbit Anti-LETMD1 antibody Catalog Number: ARP44736 Formalin Fixed Paraffin Embedded Tissue: Human Kidney Primary antibody Concentration: 1:100 Secondary Antibody: Donkey anti-Rabbit-Cy3 Secondary Antibody Concentration: 1:200 Magnification: 20x Exposure Time: 0.5-2.0sec



Immunohistochemistry

Image 3. Rabbit Anti-LETMD1 antibody Catalog Number: ARP44736 Formalin Fixed Paraffin Embedded Tissue: Human Skin Primary antibody Concentration: 1:100 Secondary Antibody: Donkey anti-Rabbit-Cy3 Secondary Antibody Concentration: 1:200 Magnification: 20x Exposure Time: 0.5-2.0sec