



Datasheet for ABIN2782008 **anti-PLD3 antibody (N-Term)**



[Go to Product page](#)

3 Images

Overview

Quantity:	100 µL
Target:	PLD3
Binding Specificity:	N-Term
Reactivity:	Human, Mouse, Rat, Cow, Dog, Rabbit, Guinea Pig, Horse
Host:	Rabbit
Clonality:	Polyclonal
Conjugate:	This PLD3 antibody is un-conjugated
Application:	Western Blotting (WB)

Product Details

Immunogen:	The immunogen is a synthetic peptide directed towards the N terminal region of human PLD3
Sequence:	WVLLVLILAV VGFALMTQL FLWEYGDLHL FGNQRPAPC YDPCEAVLVE
Predicted Reactivity:	Cow: 100%, Dog: 100%, Guinea Pig: 100%, Horse: 100%, Human: 100%, Mouse: 100%, Rabbit: 100%, Rat: 100%
Characteristics:	This is a rabbit polyclonal antibody against PLD3. It was validated on Western Blot using a cell lysate as a positive control.
Purification:	Affinity Purified

Target Details

Target:	PLD3
---------	------

Target Details

Alternative Name:	PLD3 (PLD3 Products)
Background:	<p>PLD3 is a single-pass type II membrane protein. It belongs to the phospholipase D family. PLD3 contains 2 PLD phosphodiesterase domains. The exact function of PLD3 remains unknown.</p> <p>Alias Symbols: HU-K4, HUK4</p> <p>Protein Interaction Partner: UBC, EGFR, SUMO1, NEDD8, NUDCD1, ERP44, FUBP1, PPP5C, EIF2S3, NFKB1, FBXO6, SPP1, TK1, BCL2L1, ANXA7, HGS,</p> <p>Protein Size: 490</p>
Molecular Weight:	55 kDa
Gene ID:	23646
NCBI Accession:	NM_001031696 , NP_001026866
UniProt:	Q8IV08
Pathways:	SARS-CoV-2 Protein Interactome

Application Details

Application Notes:	Optimal working dilutions should be determined experimentally by the investigator.
Comment:	Antigen size: 490 AA
Restrictions:	For Research Use only

Handling

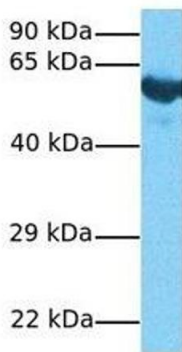
Format:	Liquid
Concentration:	Lot specific
Buffer:	Liquid. Purified antibody supplied in 1x PBS buffer with 0.09 % (w/v) sodium azide and 2 % sucrose.
Preservative:	Sodium azide
Precaution of Use:	This product contains Sodium azide: a POISONOUS AND HAZARDOUS SUBSTANCE which should be handled by trained staff only.
Handling Advice:	Avoid repeated freeze-thaw cycles.
Storage:	-20 °C
Storage Comment:	For short term use, store at 2-8°C up to 1 week. For long term storage, store at -20°C in small aliquots to prevent freeze-thaw cycles.



PLD3

Western Blotting

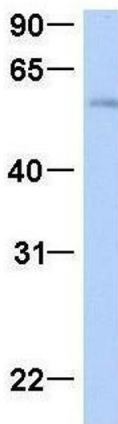
Image 1. WB Suggested Anti-PLD3 Antibody Titration: 0.2-1 ug/ml Positive Control: Human heart



PLD3

Western Blotting

Image 2. Host: Rabbit Target Name: PLD3 Sample Tissue: Human Fetal Lung Antibody Dilution: 1.0ug/ml



Western Blotting

Image 3. Host: Rabbit Target Name: PLD3 Sample Type: Human Fetal Heart Antibody Dilution: 1.0ug/ml