



[Go to Product page](#)

Datasheet for ABIN2782011
anti-RCE1/FACE2 antibody (N-Term)

2 Images

Overview

Quantity:	100 µL
Target:	RCE1/FACE2 (RCE1)
Binding Specificity:	N-Term
Reactivity:	Human, Mouse, Rat, Dog, Horse, Cow, Rabbit, Guinea Pig, Goat, Zebrafish (Danio rerio)
Host:	Rabbit
Clonality:	Polyclonal
Conjugate:	This RCE1/FACE2 antibody is un-conjugated
Application:	Immunohistochemistry (IHC), Western Blotting (WB)

Product Details

Immunogen:	The immunogen is a synthetic peptide directed towards the N terminal region of human RCE1
Sequence:	WARCLTDMRW LRNQVIAPLT EELVFRACML PMLAPCMGLG PAVFTCP LFF
Predicted Reactivity:	Cow: 100%, Dog: 100%, Goat: 93%, Guinea Pig: 100%, Horse: 100%, Human: 100%, Mouse: 100%, Rabbit: 100%, Rat: 100%, Zebrafish: 93%
Characteristics:	This is a rabbit polyclonal antibody against RCE1. It was validated on Western Blot and immunohistochemistry.
Purification:	Protein A purified

Target Details

Target:	RCE1/FACE2 (RCE1)
---------	-------------------

Target Details

Alternative Name:	RCE1 (RCE1 Products)
Background:	<p>RCE1 is an integral membrane protein which is classified as a member of the metalloproteinase family. This enzyme is thought to function in the maintenance and processing of CAAX-type prenylated proteins. This gene encodes an integral membrane protein which is classified as a member of the metalloproteinase family. This enzyme is thought to function in the maintenance and processing of CAAX-type prenylated proteins.</p> <p>Alias Symbols: FACE2, RCE1A, RCE1B</p> <p>Protein Interaction Partner: UBC,</p> <p>Protein Size: 329</p>
Molecular Weight:	36 kDa
Gene ID:	9986
NCBI Accession:	NM_005133 , NP_005124
UniProt:	Q9Y256

Application Details

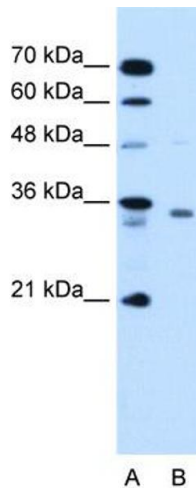
Application Notes:	Optimal working dilutions should be determined experimentally by the investigator.
Comment:	Antigen size: 329 AA
Restrictions:	For Research Use only

Handling

Format:	Liquid
Concentration:	Lot specific
Buffer:	Liquid. Purified antibody supplied in 1x PBS buffer with 0.09 % (w/v) sodium azide and 2 % sucrose.
Preservative:	Sodium azide
Precaution of Use:	This product contains Sodium azide: a POISONOUS AND HAZARDOUS SUBSTANCE which should be handled by trained staff only.
Handling Advice:	Avoid repeated freeze-thaw cycles.
Storage:	-20 °C
Storage Comment:	For short term use, store at 2-8°C up to 1 week. For long term storage, store at -20°C in small

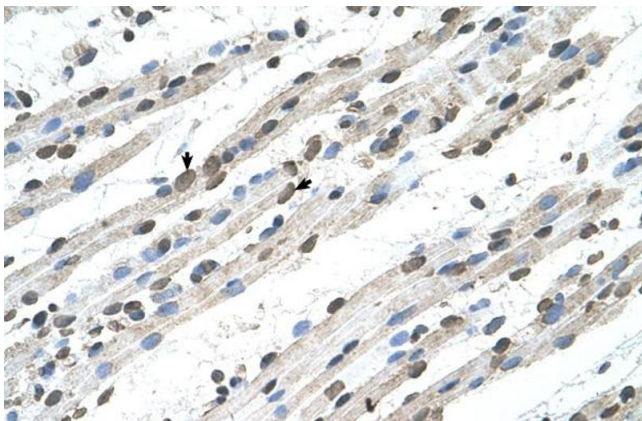
aliquots to prevent freeze-thaw cycles.

Validation report #100008 for Western Blotting (WB)



Western Blotting

Image 1. WB Suggested Anti-RCE1 Antibody Titration: 1.25ug/ml Positive Control: HepG2 cell lysate RCE1 is supported by BioGPS gene expression data to be expressed in HepG2



Immunohistochemistry

Image 2. Human Muscle