



[Go to Product page](#)

Datasheet for ABIN2782027 anti-SI antibody (N-Term)

1 Image

Overview

Quantity:	100 µL
Target:	SI
Binding Specificity:	N-Term
Reactivity:	Human, Mouse, Pig, Rabbit, Cow, Rat, Dog, Zebrafish (Danio rerio), Guinea Pig, Horse
Host:	Rabbit
Clonality:	Polyclonal
Conjugate:	This SI antibody is un-conjugated
Application:	Western Blotting (WB)

Product Details

Immunogen:	The immunogen is a synthetic peptide directed towards the N terminal region of human SI
Sequence:	NSVLFTTQNQ TPNRFRFKIT DPNRRRYEVP HQYVKEFTGP TVSDTLYDVK
Predicted Reactivity:	Cow: 100%, Dog: 93%, Guinea Pig: 86%, Horse: 100%, Human: 100%, Mouse: 86%, Pig: 100%, Rabbit: 86%, Rat: 100%, Zebrafish: 77%
Characteristics:	This is a rabbit polyclonal antibody against SI. It was validated on Western Blot using a cell lysate as a positive control.
Purification:	Affinity Purified

Target Details

Target:	SI
---------	----

Target Details

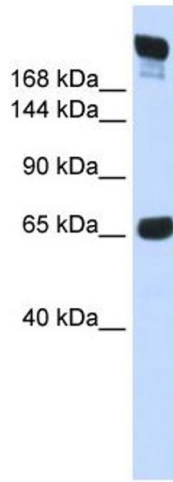
Abstract:	SI Products
Background:	SI belongs to the glycosyl hydrolase 31 family. It plays an important role in the final stage of carbohydrate digestion. Alias Symbols: MGC131621, MGC131622 Protein Interaction Partner: PRKACA, Protein Size: 1827
Molecular Weight:	209 kDa
Gene ID:	6476
NCBI Accession:	NM_001041 , NP_001032
UniProt:	P14410

Application Details

Application Notes:	Optimal working dilutions should be determined experimentally by the investigator.
Comment:	Antigen size: 1827 AA
Restrictions:	For Research Use only

Handling

Format:	Liquid
Concentration:	Lot specific
Buffer:	Liquid. Purified antibody supplied in 1x PBS buffer with 0.09 % (w/v) sodium azide and 2 % sucrose.
Preservative:	Sodium azide
Precaution of Use:	This product contains Sodium azide: a POISONOUS AND HAZARDOUS SUBSTANCE which should be handled by trained staff only.
Handling Advice:	Avoid repeated freeze-thaw cycles.
Storage:	-20 °C
Storage Comment:	For short term use, store at 2-8°C up to 1 week. For long term storage, store at -20°C in small aliquots to prevent freeze-thaw cycles.



Western Blotting

Image 1. WB Suggested Anti-SI Antibody Titration: 0.2-1 ug/ml ELISA Titer: 1:312500 Positive Control: Human Muscle