

Datasheet for ABIN2782033
anti-ECE2 antibody (Middle Region)[Go to Product page](#)

2 Images

Overview

Quantity:	100 µL
Target:	ECE2
Binding Specificity:	Middle Region
Reactivity:	Human, Mouse, Rat, Rabbit, Cow, Dog, Guinea Pig, Horse, Zebrafish (Danio rerio)
Host:	Rabbit
Clonality:	Polyclonal
Conjugate:	This ECE2 antibody is un-conjugated
Application:	Western Blotting (WB)

Product Details

Immunogen:	The immunogen is a synthetic peptide corresponding to a region of Rat
Sequence:	YMVELGMLLG GQPTSTRAQM QQVLELEIQL ATITVPQDQR RDEEKIYHKM
Predicted Reactivity:	Cow: 100%, Dog: 100%, Guinea Pig: 100%, Horse: 100%, Human: 100%, Mouse: 100%, Rabbit: 100%, Rat: 100%, Zebrafish: 93%
Characteristics:	This is a rabbit polyclonal antibody against Ece2. It was validated on Western Blot.
Purification:	Affinity Purified

Target Details

Target:	ECE2
Alternative Name:	Ece2 (ECE2 Products)

Target Details

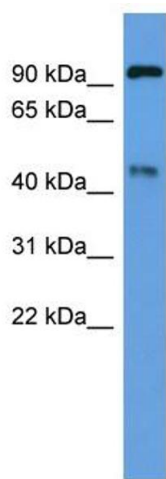
Background:	The function of Ece2 remains unknown. Alias Symbols: Ece2 Protein Size: 765
Molecular Weight:	86 kDa
Gene ID:	408243
NCBI Accession:	NM_001002815 , NP_001002815
UniProt:	Q6IE65
Pathways:	Regulation of G-Protein Coupled Receptor Protein Signaling

Application Details

Application Notes:	Optimal working dilutions should be determined experimentally by the investigator.
Comment:	Antigen size: 765 AA
Restrictions:	For Research Use only

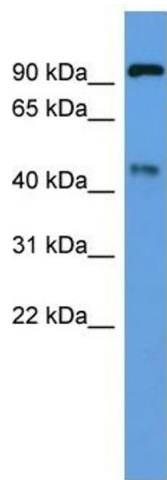
Handling

Format:	Liquid
Concentration:	Lot specific
Buffer:	Liquid. Purified antibody supplied in 1x PBS buffer with 0.09 % (w/v) sodium azide and 2 % sucrose.
Preservative:	Sodium azide
Precaution of Use:	This product contains Sodium azide: a POISONOUS AND HAZARDOUS SUBSTANCE which should be handled by trained staff only.
Handling Advice:	Avoid repeated freeze-thaw cycles.
Storage:	-20 °C
Storage Comment:	For short term use, store at 2-8°C up to 1 week. For long term storage, store at -20°C in small aliquots to prevent freeze-thaw cycles.



Western Blotting

Image 1. WB Suggested Anti-Ece2 Antibody Titration: 0.2-1 ug/ml ELISA Titer: 1:312500 Positive Control: Rat Brain



Rabbit Anti-Ece2 Antibody
Catalog Number: ARP44841
Lot Number: QC14609
Lane: Rat Brain Lysate

Antibody Titration: 1.0µg/ml
Gel Concentration: 12%

Western Blotting

Image 2. WB Suggested Anti-Ece2
Antibody Titration: 0.2-1 µg/mL ELISA Titer: 1:12500
Positive Control: Rat Brain