

Datasheet for ABIN2782037  
**anti-SIL1 antibody (C-Term)**

## 5 Images

[Go to Product page](#)

## Overview

Quantity:	100 µL
Target:	SIL1
Binding Specificity:	C-Term
Reactivity:	Human, Mouse, Rat, Cow, Dog, Guinea Pig, Horse, Rabbit
Host:	Rabbit
Clonality:	Polyclonal
Conjugate:	This SIL1 antibody is un-conjugated
Application:	Western Blotting (WB)

## Product Details

Immunogen:	The immunogen is a synthetic peptide directed towards the C terminal region of human SIL1
Sequence:	KLQQYRQVHL LPGLWEQGWC EITAHLLALP EHDAREKVLQ TLGVLLTTCR
Predicted Reactivity:	Cow: 100%, Dog: 100%, Guinea Pig: 100%, Horse: 100%, Human: 100%, Mouse: 100%, Rabbit: 100%, Rat: 100%
Characteristics:	This is a rabbit polyclonal antibody against SIL1. It was validated on Western Blot using a cell lysate as a positive control.
Purification:	Affinity Purified

## Target Details

Target:	SIL1
---------	------

## Target Details

Alternative Name:	SIL1 ( <a href="#">SIL1 Products</a> )
Background:	<p>SIL1 is a resident endoplasmic reticulum (ER), N-linked glycoprotein with an N-terminal ER targeting sequence, 2 putative N-glycosylation sites, and a C-terminal ER retention signal. This protein functions as a nucleotide exchange factor for another unfolded protein response protein. Mutations in its gene have been associated with Marinesco-Sjogren syndrome. This gene encodes a resident endoplasmic reticulum (ER), N-linked glycoprotein with an N-terminal ER targeting sequence, 2 putative N-glycosylation sites, and a C-terminal ER retention signal. This protein functions as a nucleotide exchange factor for another unfolded protein response protein. Mutations in this gene have been associated with Marinesco-Sjogren syndrome. Alternate transcriptional splice variants have been characterized.</p> <p>Alias Symbols: BAP, MSS, ULG5</p> <p>Protein Interaction Partner: UBQLN1, FBXO6, UBC, SMAD9, CCND3, HSPA5,</p> <p>Protein Size: 461</p>
Molecular Weight:	49 kDa
Gene ID:	64374
NCBI Accession:	<a href="#">NM_001037633</a> , <a href="#">NP_001032722</a>
UniProt:	<a href="#">Q9H173</a>
Pathways:	<a href="#">Unfolded Protein Response</a> , <a href="#">SARS-CoV-2 Protein Interactome</a>

## Application Details

Application Notes:	Optimal working dilutions should be determined experimentally by the investigator.
Comment:	Antigen size: 461 AA
Restrictions:	For Research Use only

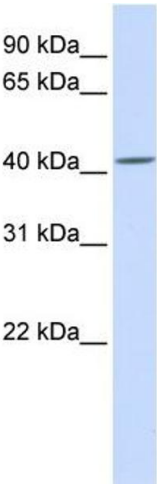
## Handling

Format:	Liquid
Concentration:	Lot specific
Buffer:	Liquid. Purified antibody supplied in 1x PBS buffer with 0.09 % (w/v) sodium azide and 2 % sucrose.
Preservative:	Sodium azide
Precaution of Use:	This product contains Sodium azide: a POISONOUS AND HAZARDOUS SUBSTANCE which

Handling

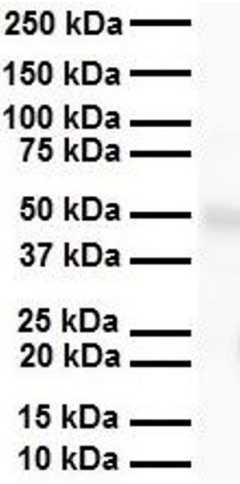
	should be handled by trained staff only.
Handling Advice:	Avoid repeated freeze-thaw cycles.
Storage:	-20 °C
Storage Comment:	For short term use, store at 2-8°C up to 1 week. For long term storage, store at -20°C in small aliquots to prevent freeze-thaw cycles.

Images



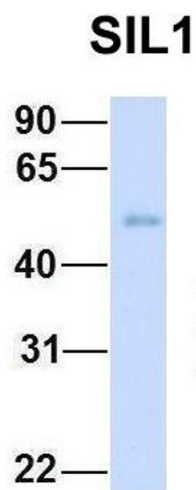
**Western Blotting**

**Image 1.** WB Suggested Anti-SIL1 Antibody Titration: 0.2-1 ug/ml ELISA Titer: 1:312500 Positive Control: Hela cell lysate SIL1 is supported by BioGPS gene expression data to be expressed in HeLa



**Western Blotting**

**Image 2.** WB Suggested Anti-SIL1 antibody Titration: 1 ug/mL Sample Type: Human heart



**Western Blotting**

**Image 3.** Host: Rabbit Target Name: SIL1 Sample Type:  
Human Fetal Heart Antibody Dilution: 1.0ug/ml

Please check the [product details page](#) for more images. Overall 5 images are available for ABIN2782037.