

Datasheet for ABIN2782042

anti-CEACAM16 antibody (Middle Region)[Go to Product page](#)**1** Image

Overview

Quantity:	100 µL
Target:	CEACAM16
Binding Specificity:	Middle Region
Reactivity:	Human, Mouse, Rat, Cow, Guinea Pig, Dog, Horse, Rabbit
Host:	Rabbit
Clonality:	Polyclonal
Conjugate:	This CEACAM16 antibody is un-conjugated
Application:	Western Blotting (WB)

Product Details

Immunogen:	The immunogen is a synthetic peptide directed towards the middle region of human CEACAM16
Sequence:	TVQGYPKDLL VYAWYRGPAS EPNRLLSQLP SGTWIAGPAH TGREVGFPNC
Predicted Reactivity:	Cow: 100%, Dog: 100%, Guinea Pig: 100%, Horse: 100%, Human: 100%, Mouse: 100%, Rabbit: 100%, Rat: 100%
Characteristics:	This is a rabbit polyclonal antibody against CEACAM16. It was validated on Western Blot using a cell lysate as a positive control.
Purification:	Affinity Purified

Target Details

Target:	CEACAM16
---------	----------

Target Details

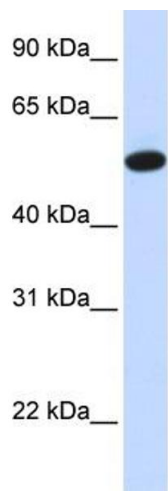
Alternative Name:	CEACAM16 (CEACAM16 Products)
Background:	<p>CEACAM16 is a single-pass type I membrane protein. It belongs to the immunoglobulin superfamily, CEA family. It contains 2 Ig-like C2-type (immunoglobulin-like) domains. The exact function of CEACAM16 remains unknown.</p> <p>Alias Symbols: CEAL2</p> <p>Protein Size: 484</p>
Molecular Weight:	53 kDa
Gene ID:	388551
NCBI Accession:	NM_001039213 , NP_001034302
UniProt:	Q2WEN9
Pathways:	Sensory Perception of Sound

Application Details

Application Notes:	Optimal working dilutions should be determined experimentally by the investigator.
Comment:	Antigen size: 484 AA
Restrictions:	For Research Use only

Handling

Format:	Liquid
Concentration:	Lot specific
Buffer:	Liquid. Purified antibody supplied in 1x PBS buffer with 0.09 % (w/v) sodium azide and 2 % sucrose.
Preservative:	Sodium azide
Precaution of Use:	This product contains Sodium azide: a POISONOUS AND HAZARDOUS SUBSTANCE which should be handled by trained staff only.
Handling Advice:	Avoid repeated freeze-thaw cycles.
Storage:	-20 °C
Storage Comment:	For short term use, store at 2-8°C up to 1 week. For long term storage, store at -20°C in small aliquots to prevent freeze-thaw cycles.



Western Blotting

Image 1. WB Suggested Anti-CEACAM16 Antibody Titration:
0.2-1 ug/ml ELISA Titer: 1:312500 Positive Control: Human
Liver