

Datasheet for ABIN2782043
anti-DPP6 antibody (Middle Region)

3 Images

[Go to Product page](#)

Overview

Quantity:	100 µL
Target:	DPP6
Binding Specificity:	Middle Region
Reactivity:	Human, Mouse, Rat, Cow, Dog, Rabbit, Horse, Guinea Pig, Zebrafish (Danio rerio)
Host:	Rabbit
Clonality:	Polyclonal
Conjugate:	This DPP6 antibody is un-conjugated
Application:	Western Blotting (WB)

Product Details

Immunogen:	The immunogen is a synthetic peptide directed towards the middle region of human DPP6
Sequence:	AAINDSRVPI MELPTYTGSI YPTVKPYHYP KAGSENPSIS LHVIGLNGPT
Predicted Reactivity:	Cow: 93%, Dog: 93%, Guinea Pig: 100%, Horse: 93%, Human: 100%, Mouse: 100%, Rabbit: 100%, Rat: 100%, Zebrafish: 91%
Characteristics:	This is a rabbit polyclonal antibody against DPP6. It was validated on Western Blot using a cell lysate as a positive control.
Purification:	Affinity Purified

Target Details

Target:	DPP6
---------	------

Target Details

Alternative Name:	DPP6 (DPP6 Products)
Background:	<p>DPP6 is a single-pass type II membrane protein that is a member of the S9B family in clan SC of the serine proteases. This protein has no detectable protease activity, most likely due to the absence of the conserved serine residue normally present in the catalytic domain of serine proteases. However, it does bind specific voltage-gated potassium channels and alters their expression and biophysical properties. This gene encodes a single-pass type II membrane protein that is a member of the S9B family in clan SC of the serine proteases. This protein has no detectable protease activity, most likely due to the absence of the conserved serine residue normally present in the catalytic domain of serine proteases. However, it does bind specific voltage-gated potassium channels and alters their expression and biophysical properties. Alternate transcriptional splice variants, encoding different isoforms, have been characterized.</p> <p>Alias Symbols: DPPX, MGC46605, VF2</p> <p>Protein Interaction Partner: KCND2, PRNP,</p> <p>Protein Size: 801</p>
Molecular Weight:	91 kDa
Gene ID:	1804
NCBI Accession:	NM_001039350 , NP_001034439
UniProt:	P42658

Application Details

Application Notes:	Optimal working dilutions should be determined experimentally by the investigator.
Comment:	Antigen size: 801 AA
Restrictions:	For Research Use only

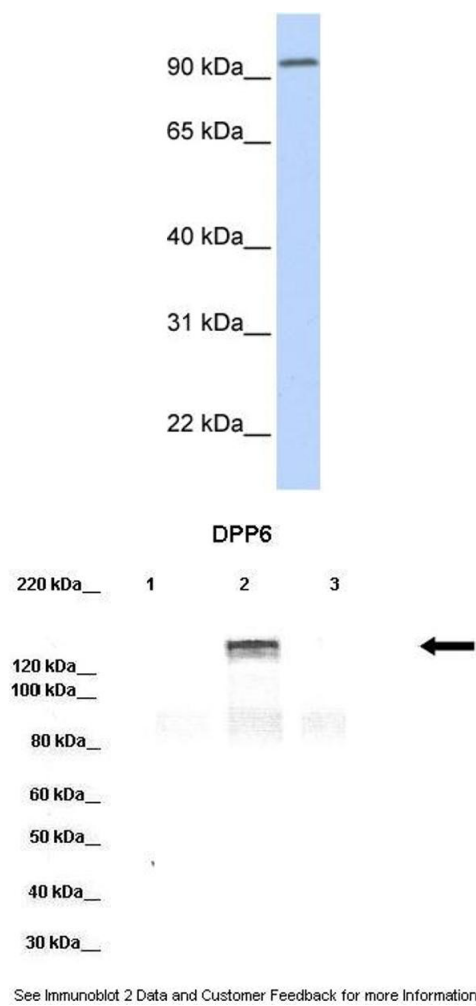
Handling

Format:	Liquid
Concentration:	Lot specific
Buffer:	Liquid. Purified antibody supplied in 1x PBS buffer with 0.09 % (w/v) sodium azide and 2 % sucrose.
Preservative:	Sodium azide
Precaution of Use:	This product contains Sodium azide: a POISONOUS AND HAZARDOUS SUBSTANCE which

Handling

	should be handled by trained staff only.
Handling Advice:	Avoid repeated freeze-thaw cycles.
Storage:	-20 °C
Storage Comment:	For short term use, store at 2-8°C up to 1 week. For long term storage, store at -20°C in small aliquots to prevent freeze-thaw cycles.

Images

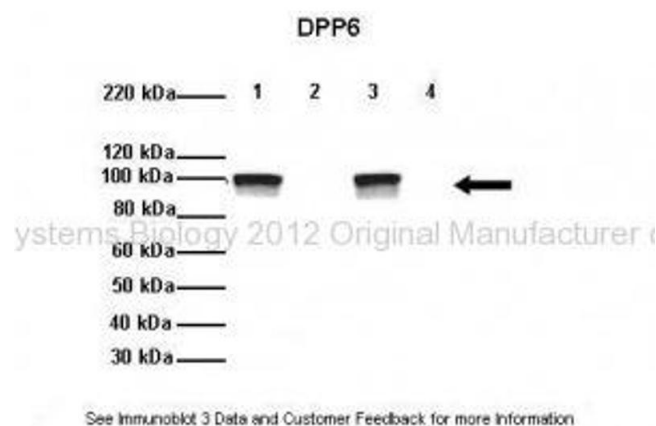


Western Blotting

Image 1. WB Suggested Anti-DPP6 Antibody Titration: 0.2-1 ug/ml ELISA Titer: 1:312500 Positive Control: Human brain

Western Blotting

Image 2. Lanes: Lane 1: 20ug HEK-293 cell lysate Lane 2: 20ug hDPP6-YFP transfected HEK-293 lysate Lane 3: 20ug hDPP10-YFP transfected HEK-293 lysate Primary Antibody Dilution: 1:1000 Secondary Antibody: Donkey anti-rabbit-HRP Secondary Antibody Dilution: 1:10,000 Gene Name: DPP6 a Submitted by: Jeanne M. Nerbonne, Arvin Soepriatna, Washington University Medical School Department of Developmental Biology



Western Blotting

Image 3. Researcher: Jeanne M. Nerbonne, Arvin Soepriatna, Washington University Medical School
Application: Western blotting Species+tissue/cell type: Mouse WT and DPP6 ^{-/-} brain
How many ug's of tissue/cell lysate run on the gel: 1. 20ug Mouse WT brain extract 2. 20ug Mouse DPP6 ^{-/-} brain extract 3. 20ug Mouse WT brain extract 4. 20ug Mouse DPP6 ^{-/-} brain extract
Primary antibody dilution: 1:1000 Secondary antibody: Donkey anti-rabbit HRP Secondary antibody dilution: 1: 10,000