



[Go to Product page](#)

Datasheet for ABIN2782053
anti-YIF1B antibody (Middle Region)

2 Images

Overview

Quantity:	100 µL
Target:	YIF1B
Binding Specificity:	Middle Region
Reactivity:	Human, Rat, Mouse, Rabbit, Cow, Dog, Guinea Pig, Horse
Host:	Rabbit
Clonality:	Polyclonal
Conjugate:	This YIF1B antibody is un-conjugated
Application:	Western Blotting (WB)

Product Details

Immunogen:	The immunogen is a synthetic peptide directed towards the middle region of human YIF1B
Sequence:	LGTQDRFSPD LLGLQASSAL AWLTLEVLAI LLSLYLVTVN TDLTTIDLVA
Predicted Reactivity:	Cow: 100%, Dog: 100%, Guinea Pig: 100%, Horse: 100%, Human: 100%, Mouse: 100%, Rabbit: 100%, Rat: 100%
Characteristics:	This is a rabbit polyclonal antibody against YIF1B. It was validated on Western Blot using a cell lysate as a positive control.
Purification:	Affinity Purified

Target Details

Target:	YIF1B
---------	-------

Target Details

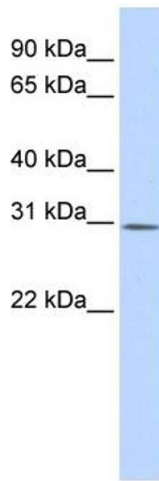
Alternative Name:	YIF1B (YIF1B Products)
Background:	YIF1B belongs to the YIF1 family. It is a multi-pass membrane protein. The functions of YIF1B remain unknown. Alias Symbols: FinGER8 Protein Interaction Partner: UBC, ATP6V1B2, Protein Size: 283
Molecular Weight:	31 kDa
Gene ID:	90522
NCBI Accession:	NM_033557 , NP_291035
UniProt:	Q5BJH7

Application Details

Application Notes:	Optimal working dilutions should be determined experimentally by the investigator.
Comment:	Antigen size: 283 AA
Restrictions:	For Research Use only

Handling

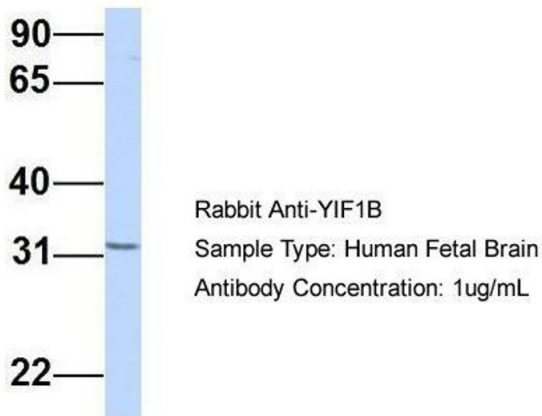
Format:	Liquid
Concentration:	Lot specific
Buffer:	Liquid. Purified antibody supplied in 1x PBS buffer with 0.09 % (w/v) sodium azide and 2 % sucrose.
Preservative:	Sodium azide
Precaution of Use:	This product contains Sodium azide: a POISONOUS AND HAZARDOUS SUBSTANCE which should be handled by trained staff only.
Handling Advice:	Avoid repeated freeze-thaw cycles.
Storage:	-20 °C
Storage Comment:	For short term use, store at 2-8°C up to 1 week. For long term storage, store at -20°C in small aliquots to prevent freeze-thaw cycles.



Western Blotting

Image 1. WB Suggested Anti-YIF1B Antibody Titration: 0.2-1 ug/ml ELISA Titer: 1:62500 Positive Control: 721_B cell lysate YIF1B is supported by BioGPS gene expression data to be expressed in 721_B

YIF1B



Western Blotting

Image 2. Host: Rabbit Target Name: YIF1B Sample Type: Human Fetal Brain Antibody Dilution: 1.0ug/ml