



[Go to Product page](#)

Datasheet for ABIN2782055
anti-CHIC1 antibody (N-Term)

1 Image

Overview

Quantity:	100 µL
Target:	CHIC1
Binding Specificity:	N-Term
Reactivity:	Human, Mouse, Rat, Zebrafish (Danio rerio), Dog, Cow, Guinea Pig, Horse, Rabbit
Host:	Rabbit
Clonality:	Polyclonal
Conjugate:	This CHIC1 antibody is un-conjugated
Application:	Western Blotting (WB)

Product Details

Immunogen:	The immunogen is a synthetic peptide directed towards the N terminal region of human CHIC1
Sequence:	LRRYAPDPVL VRGAGHITVF GLSNKFDTEF PSVLTGKVAP EEFKTSIGRV
Predicted Reactivity:	Cow: 100%, Dog: 100%, Guinea Pig: 100%, Horse: 100%, Human: 100%, Mouse: 100%, Rabbit: 100%, Rat: 100%, Zebrafish: 100%
Characteristics:	This is a rabbit polyclonal antibody against CHIC1. It was validated on Western Blot using a cell lysate as a positive control.
Purification:	Protein A purified

Target Details

Target:	CHIC1
---------	-------

Target Details

Alternative Name: CHIC1 ([CHIC1 Products](#))

Background: The function remains unknown.
Alias Symbols: RP11-108A15.1, BRX, DKFZp313P1931, DKFZp686F2342
Protein Interaction Partner: UBC,
Protein Size: 217

Molecular Weight: 24 kDa

Gene ID: 53344

NCBI Accession: [NM_001039840](#), [NP_001034929](#)

UniProt: [Q5JSZ4](#)

Application Details

Application Notes: Optimal working dilutions should be determined experimentally by the investigator.

Comment: Antigen size: 217 AA

Restrictions: For Research Use only

Handling

Format: Liquid

Concentration: Lot specific

Buffer: Liquid. Purified antibody supplied in 1x PBS buffer with 0.09 % (w/v) sodium azide and 2 % sucrose.

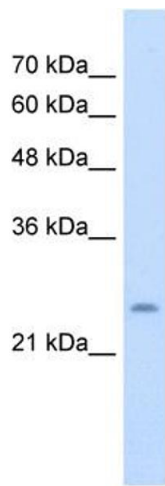
Preservative: Sodium azide

Precaution of Use: This product contains Sodium azide: a POISONOUS AND HAZARDOUS SUBSTANCE which should be handled by trained staff only.

Handling Advice: Avoid repeated freeze-thaw cycles.

Storage: -20 °C

Storage Comment: For short term use, store at 2-8°C up to 1 week. For long term storage, store at -20°C in small aliquots to prevent freeze-thaw cycles.



Western Blotting

Image 1. WB Suggested Anti-CHIC1 Antibody Titration:
5.0ug/ml Positive Control: Jurkat cell lysate