



Datasheet for ABIN2782056
anti-C19orf46 antibody (N-Term)



[Go to Product page](#)

1 Image

Overview

Quantity:	100 µL
Target:	C19orf46
Binding Specificity:	N-Term
Reactivity:	Human, Rat, Horse, Guinea Pig, Dog
Host:	Rabbit
Clonality:	Polyclonal
Conjugate:	This C19orf46 antibody is un-conjugated
Application:	Western Blotting (WB)

Product Details

Immunogen:	The immunogen is a synthetic peptide directed towards the N-terminal region of Human SYNE4
Sequence:	PLGPRLGSEP LNHPPGAPRE ADIVGCTVCP ASGEESTSPE QAQTLGQDSL
Predicted Reactivity:	Dog: 92%, Guinea Pig: 85%, Horse: 100%, Human: 100%, Rat: 85%
Characteristics:	This is a rabbit polyclonal antibody against SYNE4. It was validated on Western Blot.
Purification:	Affinity Purified

Target Details

Target:	C19orf46
Alternative Name:	SYNE4 (C19orf46 Products)
Background:	The exact function of C19orf46 remains unknown.

Target Details

Protein Interaction Partner: SEC22A, TSPAN15, TMEM115, OLFM4, VT11B, SEC23B, TMEM147, BRICD5, DEFB121, C10orf35, OSTCP1, TRIM69, RIPPLY2, TMEM182, CMTM5, KLC4, FATE1, CEP19, C3orf52, CLEC7A, EDDM3B, KLHL12, SENP2, ZNF250, SMC04, TMPRSS4, CSGALNACT2, TMEM140, TMEM248, PAQR5, MARCH2, A

Protein Size: 291

Molecular Weight: 32 kDa

Gene ID: 163183

Application Details

Application Notes: Optimal working dilution should be determined by the investigator.

Restrictions: For Research Use only

Handling

Format: Liquid

Concentration: 1 mg/mL

Buffer: Liquid. Purified antibody supplied in 1x PBS buffer with 0.09 % (w/v) sodium azide and 2 % sucrose.

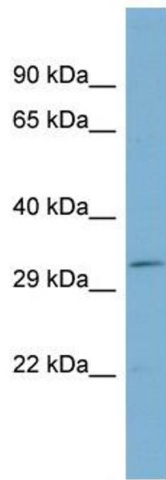
Preservative: Sodium azide

Precaution of Use: This product contains Sodium azide: a POISONOUS AND HAZARDOUS SUBSTANCE which should be handled by trained staff only.

Handling Advice: Avoid repeat freeze-thaw cycles.

Storage: -20 °C

Storage Comment: For short term use, store at 2-8°C up to 1 week. For long term storage, store at -20°C in small aliquots to prevent freeze-thaw cycles.



Western Blotting

Image 1. Host: Rabbit Target Name: SYNE4 Sample Type: ACHN Whole Cell lysates Antibody Dilution: 1.0ug/ml