

Datasheet for ABIN2782061  
**anti-FAM3C antibody (C-Term)**[Go to Product page](#)

1 Image

1 Publication

## Overview

Quantity:	100 µL
Target:	FAM3C
Binding Specificity:	C-Term
Reactivity:	Human, Rat, Mouse, Cow, Dog, Guinea Pig, Zebrafish (Danio rerio), Rabbit, Horse
Host:	Rabbit
Clonality:	Polyclonal
Conjugate:	This FAM3C antibody is un-conjugated
Application:	Western Blotting (WB)

## Product Details

Immunogen:	The immunogen is a synthetic peptide directed towards the C terminal region of human FAM3C
Sequence:	DNWVFCGGKG IKTKSPFEQH IKNNKDTN KY EGWPEVVEME GCIPQKQD
Predicted Reactivity:	Cow: 100%, Dog: 100%, Guinea Pig: 100%, Horse: 93%, Human: 100%, Mouse: 93%, Rabbit: 91%, Rat: 100%, Zebrafish: 86%
Characteristics:	This is a rabbit polyclonal antibody against FAM3C. It was validated on Western Blot using a cell lysate as a positive control.
Purification:	Affinity Purified

## Target Details

Target:	FAM3C
---------	-------

## Target Details

Alternative Name:	FAM3C ( <a href="#">FAM3C Products</a> )
Background:	<p>FAM3C is a secreted protein with a GG domain. A change in expression of this protein has been noted in pancreatic cancer-derived cells. This gene is a member of the family with sequence similarity 3 (FAM3) family and encodes a secreted protein with a GG domain. A change in expression of this protein has been noted in pancreatic cancer-derived cells. Alternate transcriptional splice variants which encode the same protein have been characterized.</p> <p>Alias Symbols: GS3786, ILEI</p> <p>Protein Interaction Partner: CREB3L1, ATP4A, NDUFS7, SFXN3, MRPL41, TOMM22, RMDN3, PTC3, TOMM7, IER3IP1, FLOT1, SNAP23, SRSF3, RALA, MPV17, MGST3, GALNT2, UBC,</p> <p>Protein Size: 227</p>
Molecular Weight:	22 kDa
Gene ID:	10447
NCBI Accession:	<a href="#">NM_001040020</a> , <a href="#">NP_001035109</a>
UniProt:	<a href="#">Q92520</a>

## Application Details

Application Notes:	Optimal working dilutions should be determined experimentally by the investigator.
Comment:	Antigen size: 227 AA
Restrictions:	For Research Use only

## Handling

Format:	Liquid
Concentration:	Lot specific
Buffer:	Liquid. Purified antibody supplied in 1x PBS buffer with 0.09 % (w/v) sodium azide and 2 % sucrose.
Preservative:	Sodium azide
Precaution of Use:	This product contains Sodium azide: a POISONOUS AND HAZARDOUS SUBSTANCE which should be handled by trained staff only.
Handling Advice:	Avoid repeated freeze-thaw cycles.
Storage:	-20 °C

## Handling

Storage Comment: For short term use, store at 2-8°C up to 1 week. For long term storage, store at -20°C in small aliquots to prevent freeze-thaw cycles.

## Publications

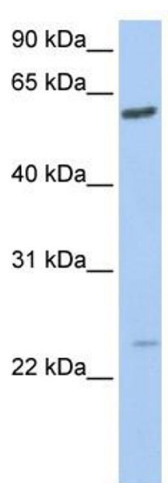
Product cited in: Wanitchakool, Ousingsawat, Sirianant, Cabrita, Faria, Schreiber, Kunzelmann: "Cellular defects by deletion of ANO10 are due to deregulated local calcium signaling." in: **Cellular signalling**, Vol. 30, pp. 41-49, (2016) ([PubMed](#)).

Schreiber, Kunzelmann: "Expression of anoctamins in retinal pigment epithelium (RPE)." in: **Pflügers Archiv : European journal of physiology**, Vol. 468, Issue 11-12, pp. 1921-1929, (2016) ([PubMed](#)).

Hammer, Wanitchakool, Sirianant, Papiol, Monnheim, Faria, Ousingsawat, Schramek, Schmitt, Margos, Michel, Kraiczy, Pawlita, Schreiber, Schulz, Fingerle, Tumani, Ehrenreich, Kunzelmann: "A Coding Variant of ANO10, Affecting Volume Regulation of Macrophages, Is Associated with Borrelia Seropositivity." in: **Molecular medicine (Cambridge, Mass.)**, Vol. 21, pp. 26-37, (2015) ([PubMed](#)).

Tian, Schreiber, Kunzelmann: "Anoctamins are a family of Ca<sup>2+</sup>-activated Cl<sup>-</sup> channels." in: **Journal of cell science**, Vol. 125, Issue Pt 21, pp. 4991-8, (2013) ([PubMed](#)).

## Images



### Western Blotting

**Image 1.** WB Suggested Anti-FAM3C Antibody Titration: 0.2-1 ug/ml Positive Control: 721\_B cell lysate