

Datasheet for ABIN2782073

## anti-NAAA antibody (Middle Region)



[Go to Product page](#)

2 Images

1 Publication

### Overview

Quantity:	100 µL
Target:	NAAA
Binding Specificity:	Middle Region
Reactivity:	Human, Mouse, Rat, Cow, Horse, Pig, Rabbit, Guinea Pig
Host:	Rabbit
Clonality:	Polyclonal
Conjugate:	This NAAA antibody is un-conjugated
Application:	Western Blotting (WB), Immunohistochemistry (IHC)

### Product Details

Immunogen:	The immunogen is a synthetic peptide directed towards the middle region of human AS AHL
Sequence:	VSWLIRATLS ESENFEAAVG KLA KTPLIAD VYYIVGGTSP REGVVITRNR
Predicted Reactivity:	Cow: 100%, Guinea Pig: 92%, Horse: 100%, Human: 100%, Mouse: 100%, Pig: 93%, Rabbit: 93%, Rat: 100%
Characteristics:	This is a rabbit polyclonal antibody against AS AHL. It was validated on Western Blot using a cell lysate as a positive control.
Purification:	Affinity Purified

### Target Details

Target:	NAAA
---------	------

## Target Details

Alternative Name:	ASAH1 ( <a href="#">NAAA Products</a> )
Background:	<p>ASAH1 is an N-acyl ethanolamine-hydrolyzing enzyme which is highly similar to acid ceramidase. This gene encodes an N-acyl ethanolamine-hydrolyzing enzyme which is highly similar to acid ceramidase. Multiple transcript variants encoding different isoforms have been found for this gene.</p> <p>Alias Symbols: NAAA, PLT, ASAH1</p> <p>Protein Interaction Partner: FBXO6, APP,</p> <p>Protein Size: 359</p>
Molecular Weight:	37 kDa
Gene ID:	27163
NCBI Accession:	<a href="#">NM_014435</a> , <a href="#">NP_055250</a>
UniProt:	<a href="#">Q02083</a>

## Application Details

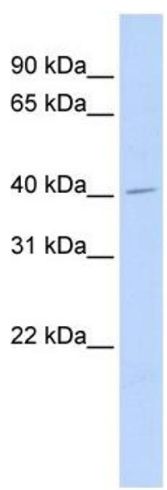
Application Notes:	Optimal working dilutions should be determined experimentally by the investigator.
Comment:	Antigen size: 359 AA
Restrictions:	For Research Use only

## Handling

Format:	Liquid
Concentration:	Lot specific
Buffer:	Liquid. Purified antibody supplied in 1x PBS buffer with 0.09 % (w/v) sodium azide and 2 % sucrose.
Preservative:	Sodium azide
Precaution of Use:	This product contains Sodium azide: a POISONOUS AND HAZARDOUS SUBSTANCE which should be handled by trained staff only.
Handling Advice:	Avoid repeated freeze-thaw cycles.
Storage:	-20 °C
Storage Comment:	For short term use, store at 2-8°C up to 1 week. For long term storage, store at -20°C in small aliquots to prevent freeze-thaw cycles.

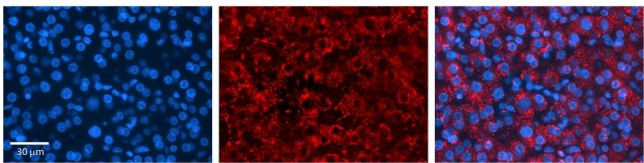
Product cited in: Sakura, Tsuboi, Uyama, Zhang, Taoka, Sugimoto, Kakehi, Ueda: "A quantitative study on splice variants of N-acyl ethanolamine acid amidase in human prostate cancer cells and other cells."  
in: **Biochimica et biophysica acta**, Vol. 1861, Issue 12 Pt A, pp. 1951-1958, (2016) ([PubMed](#)).

Images



Western Blotting

**Image 1.** WB Suggested Anti-ASAHL Antibody Titration: 0.2-1 ug/ml ELISA Titer: 1:62500 Positive Control: 721\_B cell lysate



Immunohistochemistry

**Image 2.** ASAHL antibody - middle region Formalin Fixed Paraffin Embedded Tissue: Human Liver Tissue Observed Staining: Cytoplasm in lysosomes of hepatocytes Primary Antibody Concentration: 1:100 Other Working Concentrations: 1/600 Secondary Antibody: Donkey anti-Rabbit-Cy3 Secondary Antibody Concentration: 1:200 Magnification: 20X Exposure Time: 0.5 - 2.0 sec