

Datasheet for ABIN2782082
anti-TMEM237 antibody (Middle Region)[Go to Product page](#)

2 Images

Overview

Quantity:	100 µL
Target:	TMEM237
Binding Specificity:	Middle Region
Reactivity:	Human, Mouse, Cow, Dog, Horse, Pig, Rabbit, Rat
Host:	Rabbit
Clonality:	Polyclonal
Conjugate:	This TMEM237 antibody is un-conjugated
Application:	Western Blotting (WB)

Product Details

Immunogen:	The immunogen is a synthetic peptide directed towards the middle region of human ALS2CR4
Sequence:	AGDQLSNLSN LLQYKTLAY PFQSLLYLLL ALSTISAFDR IDFAKISVAI
Predicted Reactivity:	Cow: 86%, Dog: 85%, Horse: 93%, Human: 100%, Mouse: 92%, Pig: 86%, Rabbit: 93%, Rat: 86%
Characteristics:	This is a rabbit polyclonal antibody against ALS2CR4. It was validated on Western Blot.
Purification:	Affinity Purified

Target Details

Target:	TMEM237
Alternative Name:	ALS2CR4 (TMEM237 Products)
Background:	The function of this protein remains unknown.

Target Details

Alias Symbols: DKFZp313L091, FLJ33282, JBTS14, ALS2CR4
Protein Interaction Partner: UBC, Dlg4, PRNP,
Protein Size: 408

Molecular Weight: 45 kDa

Gene ID: 65062

NCBI Accession: [NM_001044385](#), [NP_001037850](#)

UniProt: [Q96Q45](#)

Application Details

Application Notes: Optimal working dilutions should be determined experimentally by the investigator.

Comment: Antigen size: 408 AA

Restrictions: For Research Use only

Handling

Format: Liquid

Concentration: Lot specific

Buffer: Liquid. Purified antibody supplied in 1x PBS buffer with 0.09 % (w/v) sodium azide and 2 % sucrose.

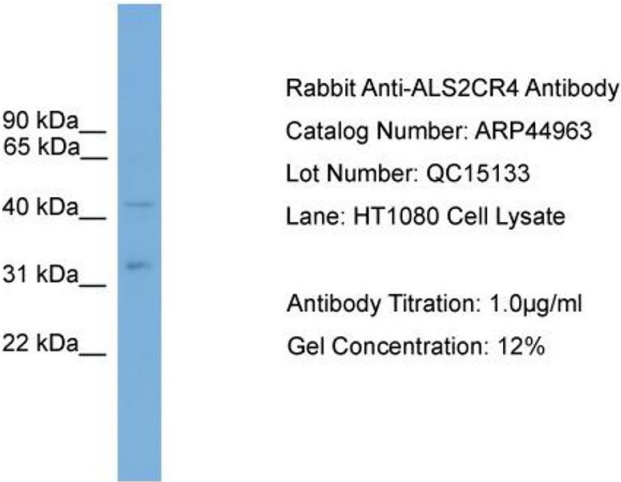
Preservative: Sodium azide

Precaution of Use: This product contains Sodium azide: a POISONOUS AND HAZARDOUS SUBSTANCE which should be handled by trained staff only.

Handling Advice: Avoid repeated freeze-thaw cycles.

Storage: -20 °C

Storage Comment: For short term use, store at 2-8°C up to 1 week. For long term storage, store at -20°C in small aliquots to prevent freeze-thaw cycles.

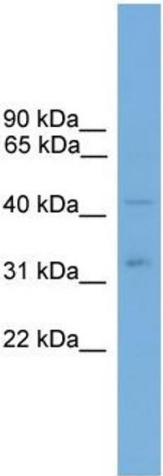


Western Blotting

Image 1. WB Suggested Anti-ALS2CR4

Antibody Titration: 0.2-1 µg/mL

Positive Control: HT1080 cell lysate



Western Blotting

Image 2. WB Suggested Anti-ALS2CR4 Antibody Titration: 0.2-1 ug/ml Positive Control: HT1080 cell lysate