

Datasheet for ABIN2782085  
**anti-CLCC1 antibody (N-Term)**[Go to Product page](#)

## 2 Images

## Overview

Quantity:	100 µL
Target:	CLCC1
Binding Specificity:	N-Term
Reactivity:	Human, Rat, Mouse, Dog, Cow, Rabbit, Guinea Pig, Horse, Pig
Host:	Rabbit
Clonality:	Polyclonal
Conjugate:	This CLCC1 antibody is un-conjugated
Application:	Western Blotting (WB), Immunohistochemistry (IHC)

## Product Details

Immunogen:	The immunogen is a synthetic peptide directed towards the N terminal region of human CLCC1
Sequence:	MHYDAEILK RETLLEIQKF LNGEDWKPGA LDDALSDILI NFKFHDFETW
Predicted Reactivity:	Cow: 100%, Dog: 100%, Guinea Pig: 93%, Horse: 93%, Human: 100%, Mouse: 100%, Pig: 100%, Rabbit: 100%, Rat: 100%
Characteristics:	This is a rabbit polyclonal antibody against CLCC1. It was validated on Western Blot and immunohistochemistry.
Purification:	Protein A purified

## Target Details

Target:	CLCC1
---------	-------

## Target Details

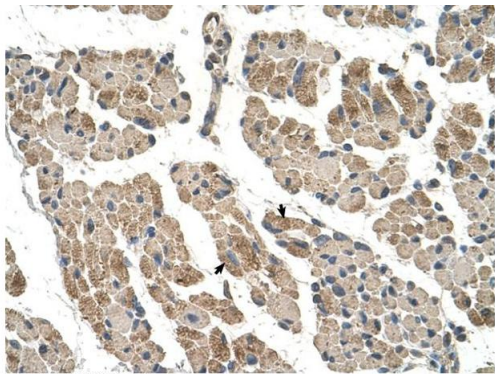
Alternative Name:	CLCC1 ( <a href="#">CLCC1 Products</a> )
Background:	CLCC1 seems to act as a chloride ion channel. Alias Symbols: KIAA0761, MCLC, RP11-475E11.6 Protein Interaction Partner: UBC, CUL3, Protein Size: 551
Molecular Weight:	61 kDa
Gene ID:	23155
NCBI Accession:	<a href="#">NM_001048210</a> , <a href="#">NP_001041675</a>
UniProt:	<a href="#">Q96S66</a>
Pathways:	<a href="#">SARS-CoV-2 Protein Interactome</a> , <a href="#">The Global Phosphorylation Landscape of SARS-CoV-2 Infection</a>

## Application Details

Application Notes:	Optimal working dilutions should be determined experimentally by the investigator.
Comment:	Antigen size: 551 AA
Restrictions:	For Research Use only

## Handling

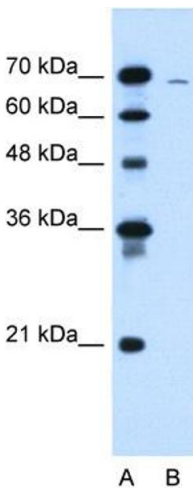
Format:	Liquid
Concentration:	Lot specific
Buffer:	Liquid. Purified antibody supplied in 1x PBS buffer with 0.09 % (w/v) sodium azide and 2 % sucrose.
Preservative:	Sodium azide
Precaution of Use:	This product contains Sodium azide: a POISONOUS AND HAZARDOUS SUBSTANCE which should be handled by trained staff only.
Handling Advice:	Avoid repeated freeze-thaw cycles.
Storage:	-20 °C
Storage Comment:	For short term use, store at 2-8°C up to 1 week. For long term storage, store at -20°C in small aliquots to prevent freeze-thaw cycles.



Rabbit Anti-CLCC1 Antibody  
Catalog Number: ARP44970  
Lot Number: QC15136  
Paraffin Embedded Tissue: Human Muscle  
Cells with Positive label: Skeletal muscle cells (Indicated with Arrows)  
Antibody Concentration: 4.0-8.0 µg/ml  
Magnification: 400X

### Immunohistochemistry

**Image 1.** Human Muscle



### Western Blotting

**Image 2.** WB Suggested Anti-CLCC1 Antibody Titration:  
1.25ug/ml Positive Control: HepG2 cell lysate