

Datasheet for ABIN2782090
anti-SPPL2B antibody (N-Term)

3 Images

1 Publication

[Go to Product page](#)

Overview

Quantity:	100 µL
Target:	SPPL2B
Binding Specificity:	N-Term
Reactivity:	Human, Rat, Cow, Mouse, Pig, Horse, Dog, Guinea Pig
Host:	Rabbit
Clonality:	Polyclonal
Conjugate:	This SPPL2B antibody is un-conjugated
Application:	Western Blotting (WB), Immunohistochemistry (IHC)

Product Details

Immunogen:	The immunogen is a synthetic peptide directed towards the N terminal region of human SPPL2B
Sequence:	VARGNCTFYE KVRLAQGSGA RGLLIVSRER LVPPGGNKQTQ YDEIGIPVAL
Predicted Reactivity:	Cow: 86%, Dog: 86%, Guinea Pig: 79%, Horse: 86%, Human: 100%, Mouse: 86%, Pig: 86%, Rat: 86%
Characteristics:	This is a rabbit polyclonal antibody against SPPL2B. It was validated on Western Blot and immunohistochemistry.
Purification:	Affinity Purified

Target Details

Target:	SPPL2B
---------	--------

Target Details

Alternative Name:	SPPL2B (SPPL2B Products)
Background:	<p>SPPL2B is a member of the GXGD family of aspartic proteases. The GXGD proteases are transmembrane proteins with two conserved catalytic motifs localized within the membrane-spanning regions. This enzyme localizes to endosomes, lysosomes, and the plasma membrane. It cleaves the transmembrane domain of tumor necrosis factor alpha to release the intracellular domain, which triggers cytokine expression in the innate and adaptive immunity pathways.</p> <p>Alias Symbols: IMP4, KIAA1532, MGC111084, PSL1, IMP-4</p> <p>Protein Size: 511</p>
Molecular Weight:	56 kDa
Gene ID:	56928
NCBI Accession:	NM_001077238 , NP_001070706

Application Details

Application Notes:	Optimal working dilutions should be determined experimentally by the investigator.
Comment:	Antigen size: 511 AA
Restrictions:	For Research Use only

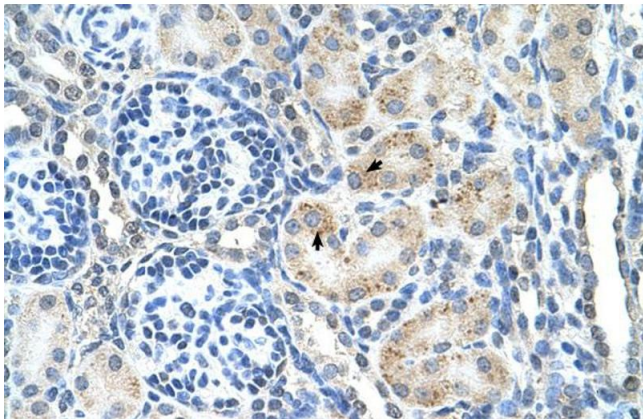
Handling

Format:	Liquid
Concentration:	Lot specific
Buffer:	Liquid. Purified antibody supplied in 1x PBS buffer with 0.09 % (w/v) sodium azide and 2 % sucrose.
Preservative:	Sodium azide
Precaution of Use:	This product contains Sodium azide: a POISONOUS AND HAZARDOUS SUBSTANCE which should be handled by trained staff only.
Handling Advice:	Avoid repeated freeze-thaw cycles.
Storage:	-20 °C
Storage Comment:	For short term use, store at 2-8°C up to 1 week. For long term storage, store at -20°C in small aliquots to prevent freeze-thaw cycles.

Publications

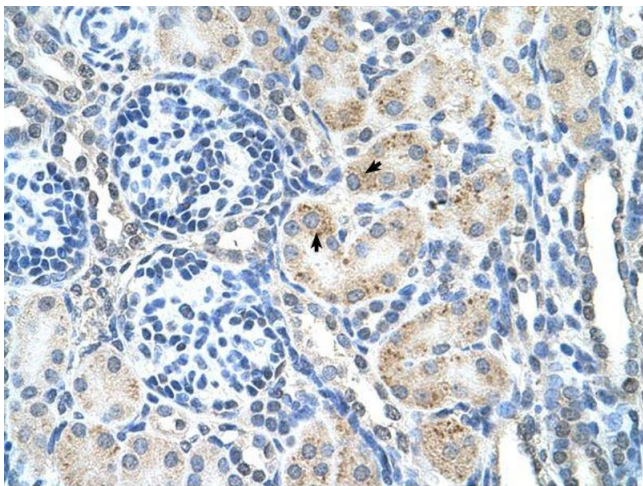
Product cited in: Spellman, Ahmed, Dubach, Gardiner: "Expression of trisomic proteins in Down syndrome model systems." in: **Gene**, Vol. 512, Issue 2, pp. 219-25, (2012) ([PubMed](#)).

Images



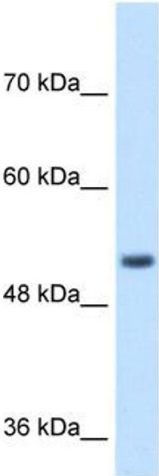
Immunohistochemistry

Image 1. Human kidney



Immunohistochemistry

Image 2.



Western Blotting

Image 3. WB Suggested Anti-SPPL2B Antibody Titration: 1 ug/ml Positive Control: Jurkat cell lysate SPPL2B is supported by BioGPS gene expression data to be expressed in Jurkat