

Datasheet for ABIN2782094
anti-CRELD1 antibody (C-Term)[Go to Product page](#)

3 Images

Overview

| | |
|----------------------|---|
| Quantity: | 100 µL |
| Target: | CRELD1 |
| Binding Specificity: | C-Term |
| Reactivity: | Human, Mouse, Rat, Dog, Cow, Guinea Pig, Horse |
| Host: | Rabbit |
| Clonality: | Polyclonal |
| Conjugate: | This CRELD1 antibody is un-conjugated |
| Application: | Immunohistochemistry (IHC), Western Blotting (WB) |

Product Details

| | |
|-----------------------|---|
| Immunogen: | The immunogen is a synthetic peptide directed towards the C terminal region of human CRELD1 |
| Sequence: | TEVCPGENKQ CENTEGGYRC ICAEGYKQME GICVKEQIPE SAGFFSEMTE |
| Predicted Reactivity: | Cow: 100%, Dog: 100%, Guinea Pig: 100%, Horse: 100%, Human: 100%, Mouse: 86%, Rat: 93% |
| Characteristics: | This is a rabbit polyclonal antibody against CRELD1. It was validated on Western Blot and immunohistochemistry. |
| Purification: | Protein A purified |

Target Details

| | |
|---------|--------|
| Target: | CRELD1 |
|---------|--------|

Target Details

| | |
|-------------------|--|
| Alternative Name: | CRELD1 (CRELD1 Products) |
| Background: | <p>Epidermal growth factor (EGF, MIM 131530)-like repeats are a class of cysteine-rich domains that mediate interactions between proteins of diverse function. EGF domains are found in proteins that are either completely secreted or have transmembrane regions that tether the protein to the cell surface. CRELD1 is the founding member of a family of matricellular proteins.</p> <p>Alias Symbols: AVSD2, CIRRIIN, DKFZP566D213</p> <p>Protein Interaction Partner: ZNF408, COPS6, ATP5J2, EEF1G, POLA2, SETDB1, EIF6, GDF9, KAT5, PTN,</p> <p>Protein Size: 420</p> |
| Molecular Weight: | 45 kDa |
| Gene ID: | 78987 |
| NCBI Accession: | NM_001077415 , NP_001070883 |
| UniProt: | Q96HD1 |

Application Details

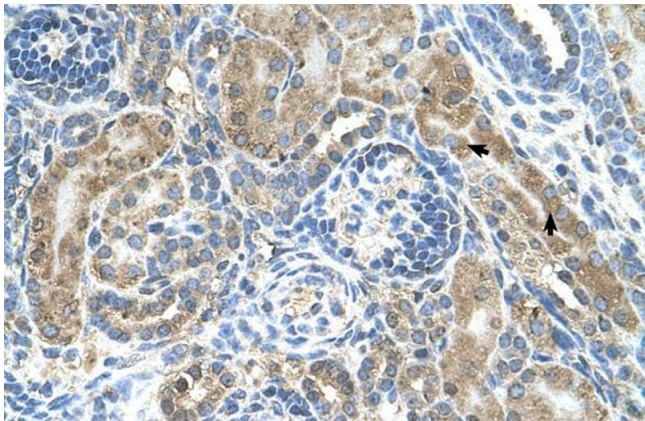
| | |
|--------------------|--|
| Application Notes: | Optimal working dilutions should be determined experimentally by the investigator. |
| Comment: | Antigen size: 420 AA |
| Restrictions: | For Research Use only |

Handling

| | |
|--------------------|--|
| Format: | Liquid |
| Concentration: | Lot specific |
| Buffer: | Liquid. Purified antibody supplied in 1x PBS buffer with 0.09 % (w/v) sodium azide and 2 % sucrose. |
| Preservative: | Sodium azide |
| Precaution of Use: | This product contains Sodium azide: a POISONOUS AND HAZARDOUS SUBSTANCE which should be handled by trained staff only. |
| Handling Advice: | Avoid repeated freeze-thaw cycles. |
| Storage: | -20 °C |
| Storage Comment: | For short term use, store at 2-8°C up to 1 week. For long term storage, store at -20°C in small |

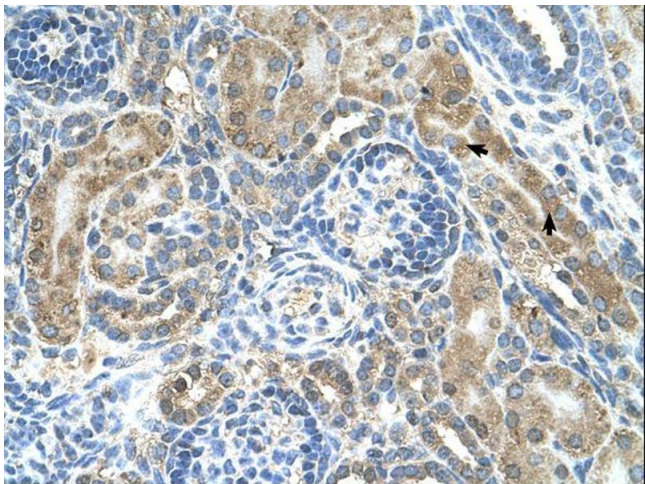
aliquots to prevent freeze-thaw cycles.

Images



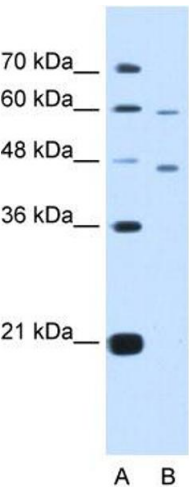
Immunohistochemistry

Image 1. Human kidney



Immunohistochemistry

Image 2.



Western Blotting

Image 3. WB Suggested Anti-CRELD1 Antibody Titration:
5.0ug/ml Positive Control: HepG2 cell lysate