

Datasheet for ABIN2782110
anti-ACVR2B antibody (Middle Region)

5 Images

[Go to Product page](#)

Overview

Quantity:	100 µL
Target:	ACVR2B
Binding Specificity:	Middle Region
Reactivity:	Human, Rat, Mouse, Dog, Cow, Guinea Pig, Horse, Sheep, Zebrafish (Danio rerio)
Host:	Rabbit
Clonality:	Polyclonal
Conjugate:	This ACVR2B antibody is un-conjugated
Application:	Western Blotting (WB)

Product Details

Immunogen:	The immunogen is a synthetic peptide directed towards the middle region of human ACVR2B
Sequence:	LCHVAETMSR GLSYLHEDVP WCRGEGHKPS IAH RDFKSKN VLLKSDLTAV
Predicted Reactivity:	Cow: 100%, Dog: 100%, Guinea Pig: 100%, Horse: 100%, Human: 100%, Mouse: 100%, Rat: 100%, Sheep: 100%, Zebrafish: 86%
Characteristics:	This is a rabbit polyclonal antibody against ACVR2B. It was validated on Western Blot using a cell lysate as a positive control.
Purification:	Affinity Purified

Target Details

Target:	ACVR2B
---------	--------

Target Details

Alternative Name:	ACVR2B (ACVR2B Products)
Background:	<p>Activin receptors are all transmembrane proteins, composed of a ligand-binding extracellular domain with cysteine-rich region, a transmembrane domain, and a cytoplasmic domain with predicted serine/threonine specificity. Type I receptors are essential for</p> <p>Alias Symbols: ACTRIIB, ActR-IIB, MGC116908, HTX4</p> <p>Protein Interaction Partner: GDF2, BMP10, INHBA, PEG10, ERBB2IP, HSP90AA1, SMAD7, SMAD6, SMAD2, IGSF1, SYNJ2BP, SNX6, SNX2, TGFBRAP1, GDF11, MSTN, ACVR1B, SNX1, INHBC, GDF5, INHBB, BMP7, BMP2, ENG, BMP6,</p> <p>Protein Size: 512</p>
Molecular Weight:	58 kDa
Gene ID:	93
NCBI Accession:	NM_001106 , NP_001097
UniProt:	Q13705
Pathways:	Hormone Transport , Cancer Immune Checkpoints

Application Details

Application Notes:	Optimal working dilutions should be determined experimentally by the investigator.
Comment:	Antigen size: 512 AA
Restrictions:	For Research Use only

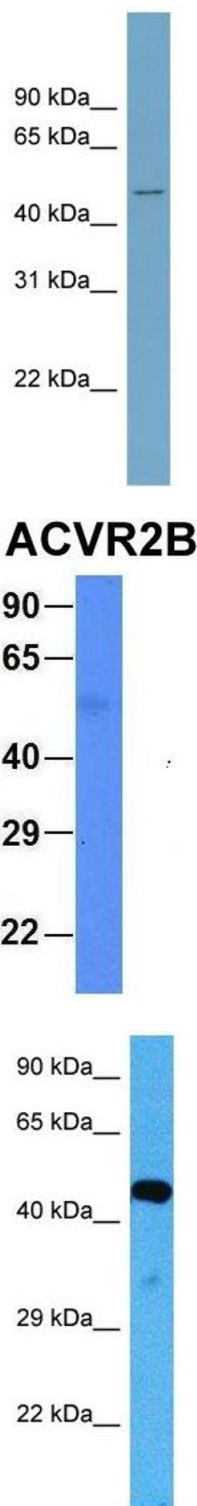
Handling

Format:	Liquid
Concentration:	Lot specific
Buffer:	Liquid. Purified antibody supplied in 1x PBS buffer with 0.09 % (w/v) sodium azide and 2 % sucrose.
Preservative:	Sodium azide
Precaution of Use:	This product contains Sodium azide: a POISONOUS AND HAZARDOUS SUBSTANCE which should be handled by trained staff only.
Handling Advice:	Avoid repeated freeze-thaw cycles.
Storage:	-20 °C

Handling

Storage Comment: For short term use, store at 2-8°C up to 1 week. For long term storage, store at -20°C in small aliquots to prevent freeze-thaw cycles.

Images



Western Blotting

Image 1. WB Suggested Anti-ACVR2B Antibody Titration: 0.2-1 ug/ml ELISA Titer: 1:1562500 Positive Control: PANC1 cell lysate

Western Blotting

Image 2. Host: Rabbit Target Name: FAM46C Sample Type: Human Fetal Liver Antibody Dilution: 1.0ug/ml

Western Blotting

Image 3. Host: Mouse Target Name: ACVR2B Sample Tissue: Mouse Skeletal Muscle Antibody Dilution: 1ug/ml

Please check the [product details page](#) for more images. Overall 5 images are available for ABIN2782110.