

Datasheet for ABIN2782116
anti-Aquaporin 8 antibody (Middle Region)[Go to Product page](#)

1 Image

Overview

Quantity:	100 µL
Target:	Aquaporin 8 (AQP8)
Binding Specificity:	Middle Region
Reactivity:	Human, Rat, Mouse, Sheep, Cow, Guinea Pig, Horse, Pig, Rabbit, Dog
Host:	Rabbit
Clonality:	Polyclonal
Conjugate:	This Aquaporin 8 antibody is un-conjugated
Application:	Western Blotting (WB)

Product Details

Immunogen:	The immunogen is a synthetic peptide directed towards the middle region of Rat Aqp8
Sequence:	VTLVGGLKTM LLIPYWVSQL FGGMIGAALA KVSPEERFW NASGAFAIV
Predicted Reactivity:	Cow: 86%, Dog: 100%, Guinea Pig: 79%, Horse: 100%, Human: 100%, Mouse: 93%, Pig: 100%, Rabbit: 100%, Rat: 93%, Sheep: 100%
Characteristics:	This is a rabbit polyclonal antibody against Aqp8. It was validated on Western Blot.
Purification:	Affinity Purified

Target Details

Target:	Aquaporin 8 (AQP8)
Alternative Name:	Aqp8 (AQP8 Products)

Target Details

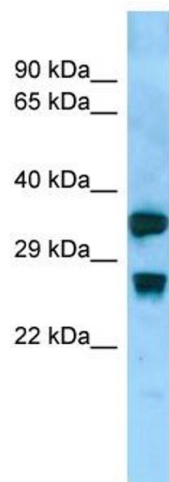
Background:	Aqp8 plays a role in water transport across hepatocyte membranes. Alias Symbols: AQP-8 Protein Size: 263
Molecular Weight:	28 kDa
Gene ID:	29172
NCBI Accession:	NM_019158 , NP_062031
UniProt:	P56405

Application Details

Application Notes:	Optimal working dilutions should be determined experimentally by the investigator.
Comment:	Antigen size: 263 AA
Restrictions:	For Research Use only

Handling

Format:	Liquid
Concentration:	Lot specific
Buffer:	Liquid. Purified antibody supplied in 1x PBS buffer with 0.09 % (w/v) sodium azide and 2 % sucrose.
Preservative:	Sodium azide
Precaution of Use:	This product contains Sodium azide: a POISONOUS AND HAZARDOUS SUBSTANCE which should be handled by trained staff only.
Handling Advice:	Avoid repeated freeze-thaw cycles.
Storage:	-20 °C
Storage Comment:	For short term use, store at 2-8°C up to 1 week. For long term storage, store at -20°C in small aliquots to prevent freeze-thaw cycles.



Western Blotting

Image 1. Host: Rabbit Target Name: Aqp8 Sample Type: Rat Small Intestine lysates Antibody Dilution: 1.0ug/ml