

Datasheet for ABIN2782126
anti-MEGF6 antibody (Middle Region)



[Go to Product page](#)

1 Image

Overview

Quantity:	100 µL
Target:	MEGF6
Binding Specificity:	Middle Region
Reactivity:	Human, Mouse, Rat, Dog, Guinea Pig
Host:	Rabbit
Clonality:	Polyclonal
Conjugate:	This MEGF6 antibody is un-conjugated
Application:	Western Blotting (WB)

Product Details

Immunogen:	The immunogen is a synthetic peptide directed towards the middle region of Megf6
Sequence:	RRGCTSLEES VVDLDGRLPF VRPLPHIAVL RDELPRLFQD DYGAEEEEAAA
Predicted Reactivity:	Dog: 86%, Guinea Pig: 86%, Human: 100%, Mouse: 93%, Rat: 93%
Characteristics:	This is a rabbit polyclonal antibody against Megf6. It was validated on Western Blot.
Purification:	Affinity Purified

Target Details

Target:	MEGF6
Alternative Name:	Megf6 (MEGF6 Products)
Background:	The function of this protein remains unknown.

Target Details

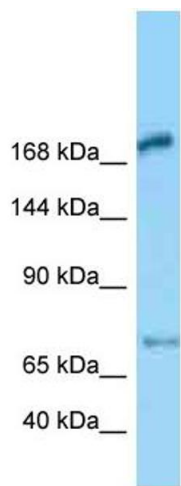
	Alias Symbols: Egfl3
	Protein Size: 1574
Molecular Weight:	173 kDa
Gene ID:	65049
NCBI Accession:	NM_022955 , NP_075244
UniProt:	O88281

Application Details

Application Notes:	Optimal working dilutions should be determined experimentally by the investigator.
Comment:	Antigen size: 1574 AA
Restrictions:	For Research Use only

Handling

Format:	Liquid
Concentration:	Lot specific
Buffer:	Liquid. Purified antibody supplied in 1x PBS buffer with 0.09 % (w/v) sodium azide and 2 % sucrose.
Preservative:	Sodium azide
Precaution of Use:	This product contains Sodium azide: a POISONOUS AND HAZARDOUS SUBSTANCE which should be handled by trained staff only.
Handling Advice:	Avoid repeated freeze-thaw cycles.
Storage:	-20 °C
Storage Comment:	For short term use, store at 2-8°C up to 1 week. For long term storage, store at -20°C in small aliquots to prevent freeze-thaw cycles.



Western Blotting

Image 1. WB Suggested Anti-Megf6 Antibody Titration: 1.0 ug/ml Positive Control: Rat Lung