

Datasheet for ABIN2782135
anti-ATP1B2 antibody (N-Term)[Go to Product page](#)

1 Image

2 Publications

Overview

Quantity:	100 µL
Target:	ATP1B2
Binding Specificity:	N-Term
Reactivity:	Human, Mouse, Rat, Cow, Dog, Guinea Pig, Horse, Rabbit, Zebrafish (Danio rerio)
Host:	Rabbit
Clonality:	Polyclonal
Conjugate:	This ATP1B2 antibody is un-conjugated
Application:	Western Blotting (WB)

Product Details

Immunogen:	The immunogen is a synthetic peptide corresponding to a region of Mouse
Sequence:	WVMLQTVSDH TPKYQDRLAT PGLMIRPKTE NLDVIVNISD TESWGQHVQK
Predicted Reactivity:	Cow: 100%, Dog: 100%, Guinea Pig: 100%, Horse: 100%, Human: 100%, Mouse: 100%, Rabbit: 93%, Rat: 100%, Zebrafish: 79%
Characteristics:	This is a rabbit polyclonal antibody against Atp1b2. It was validated on Western Blot.
Purification:	Affinity Purified

Target Details

Target:	ATP1B2
Alternative Name:	Atp1b2 (ATP1B2 Products)

Target Details

Background:	<p>This is the non-catalytic component of the active enzyme, which catalyzes the hydrolysis of ATP coupled with the exchange of Na⁺ and K⁺ ions across the plasma membrane. The exact function of the beta-2 subunit is not known.</p> <p>Alias Symbols: Amog, Atpb-2</p> <p>Protein Size: 290</p>
Molecular Weight:	33 kDa
Gene ID:	11932
NCBI Accession:	NM_013415 , NP_038201
UniProt:	P14231
Pathways:	Thyroid Hormone Synthesis

Application Details

Application Notes:	Optimal working dilutions should be determined experimentally by the investigator.
Comment:	Antigen size: 290 AA
Restrictions:	For Research Use only

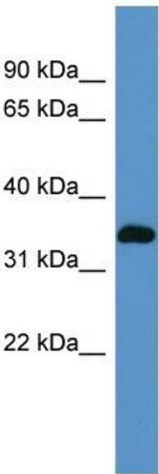
Handling

Format:	Liquid
Concentration:	Lot specific
Buffer:	Liquid. Purified antibody supplied in 1x PBS buffer with 0.09 % (w/v) sodium azide and 2 % sucrose.
Preservative:	Sodium azide
Precaution of Use:	This product contains Sodium azide: a POISONOUS AND HAZARDOUS SUBSTANCE which should be handled by trained staff only.
Handling Advice:	Avoid repeated freeze-thaw cycles.
Storage:	-20 °C
Storage Comment:	For short term use, store at 2-8°C up to 1 week. For long term storage, store at -20°C in small aliquots to prevent freeze-thaw cycles.

Publications

Product cited in: Spellman, Ahmed, Dubach, Gardiner: "Expression of trisomic proteins in Down syndrome model systems." in: **Gene**, Vol. 512, Issue 2, pp. 219-25, (2012) ([PubMed](#)).

Images



Western Blotting

Image 1. WB Suggested Anti-Atp1b2 Antibody Titration: 0.2-1 ug/ml ELISA Titer: 1:62500 Positive Control: Mouse Kidney