

Datasheet for ABIN2782136  
**anti-ATP2A2 antibody (C-Term)**[Go to Product page](#)

## 3 Images

## Overview

Quantity:	100 µL
Target:	ATP2A2
Binding Specificity:	C-Term
Reactivity:	Human, Mouse, Rat, Rabbit, Cow, Dog, Guinea Pig, Horse, Zebrafish (Danio rerio)
Host:	Rabbit
Clonality:	Polyclonal
Conjugate:	This ATP2A2 antibody is un-conjugated
Application:	Western Blotting (WB), Immunohistochemistry (IHC)

## Product Details

Immunogen:	The immunogen is a synthetic peptide directed towards the C terminal region of human ATP2A2
Sequence:	VNLVTDGLPA TALGFNPPDL DIMNKPPRNP KEPLISGWLF FRYLAIGCYV
Predicted Reactivity:	Cow: 100%, Dog: 100%, Guinea Pig: 100%, Horse: 100%, Human: 100%, Mouse: 100%, Rabbit: 100%, Rat: 100%, Zebrafish: 100%
Characteristics:	This is a rabbit polyclonal antibody against ATP2A2. It was validated on Western Blot using a cell lysate as a positive control.
Purification:	Affinity Purified

## Target Details

Target:	ATP2A2
---------	--------

## Target Details

Alternative Name: ATP2A2 ([ATP2A2 Products](#))

Background: ATP2A2 is one of the SERCA Ca(2+)-ATPases, which are intracellular pumps located in the sarcoplasmic or endoplasmic reticula of muscle cells. This enzyme catalyzes the hydrolysis of ATP coupled with the translocation of calcium from the cytosol into the sarcoplasmic reticulum lumen, and is involved in regulation of the contraction/relaxation cycle. Mutations in this gene cause Darier-White disease, also known as keratosis follicularis, an autosomal dominant skin disorder characterized by loss of adhesion between epidermal cells and abnormal keratinization. Alternative splicing results in multiple transcript variants encoding different isoforms. This gene encodes one of the SERCA Ca(2+)-ATPases, which are intracellular pumps located in the sarcoplasmic or endoplasmic reticula of muscle cells. This enzyme catalyzes the hydrolysis of ATP coupled with the translocation of calcium from the cytosol to the sarcoplasmic reticulum lumen, and is involved in regulation of the contraction/relaxation cycle. Mutations in this gene cause Darier-White disease, also known as keratosis follicularis, an autosomal dominant skin disorder characterized by loss of adhesion between epidermal cells and abnormal keratinization. Alternative splicing results in two transcript variants encoding different isoforms.

Alias Symbols: ATP2B, DAR, DD, DKFZp686P0211, FLJ20293, FLJ38063, MGC45367, SERCA2

Protein Interaction Partner: ERLIN2, UBC, SUMO2, SPRTN, PTPLAD1, LGR4, MDM2, ASB14, ASB5, ASB17, ASB1, TRIM13, SUZ12, RNF2, EZH2, rev, S100A1, EGFR, ADRB2, ILK, CLN5, CLN3, env, NOS2, ATF2, CFTR, MDC1, ECT2, SLC3A2, ITPR3, CUL3, FBXO25, SPP1, SIRT7, ELAVL1, SUMO1, AMFR, HDAC5, CAMK2A

Protein Size: 1042

Molecular Weight: 115 kDa

Gene ID: 488

NCBI Accession: [NM\\_170665](#), [NP\\_733765](#)

UniProt: [P16615](#)

Pathways: [Myometrial Relaxation and Contraction](#), [ER-Nucleus Signaling](#), [Ribonucleoside Biosynthetic Process](#)

## Application Details

Application Notes: Optimal working dilutions should be determined experimentally by the investigator.

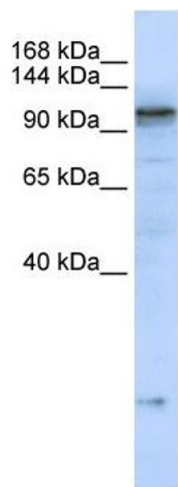
Comment: Antigen size: 1042 AA

Restrictions: For Research Use only

# Handling

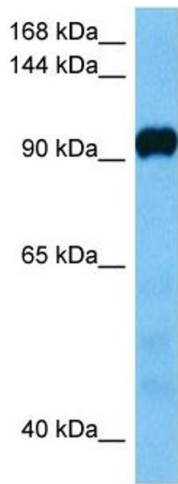
Format:	Liquid
Concentration:	Lot specific
Buffer:	Liquid. Purified antibody supplied in 1x PBS buffer with 0.09 % (w/v) sodium azide and 2 % sucrose.
Preservative:	Sodium azide
Precaution of Use:	This product contains Sodium azide: a POISONOUS AND HAZARDOUS SUBSTANCE which should be handled by trained staff only.
Handling Advice:	Avoid repeated freeze-thaw cycles.
Storage:	-20 °C
Storage Comment:	For short term use, store at 2-8°C up to 1 week. For long term storage, store at -20°C in small aliquots to prevent freeze-thaw cycles.

# Images



**Western Blotting**

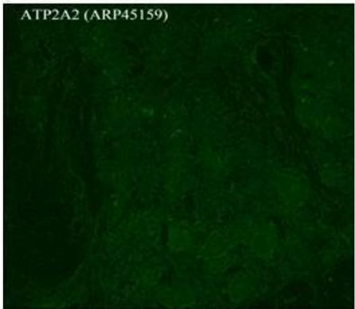
**Image 1.** WB Suggested Anti-ATP2A2 Antibody Titration: 0.2-1 ug/ml ELISA Titer: 1:62500 Positive Control: MCF7 cell lysate



**Western Blotting**

**Image 2.** Host: Mouse Target Name: ATP2A3 Sample Tissue: Mouse Liver Antibody Dilution: 1ug/ml

ATP2A2



Green: ATP2A2

See IHC 1 Data and Customer Feedback for more Information

Immunohistochemistry

**Image 3.** Sample Type : Rhesus macaque spinal cord  
Primary Antibody Dilution : 1:300 Secondary Antibody : Donkey anti Rabbit 488 Secondary Antibody Dilution : 1:500  
Color/Signal Descriptions : Green: ATP2A2 Gene Name : APLP2 Submitted by : Timur Mavlyutov, Ph. D., Department of Pharmacology, University of Wisconsin Medical School, 1300 University Avenue, Madison, WI 53706