



[Go to Product page](#)

Datasheet for ABIN2782140  
**anti-Cadherin 4 antibody (Middle Region)**

2 Images

Overview

Quantity:	100 µL
Target:	Cadherin 4 (CDH4)
Binding Specificity:	Middle Region
Reactivity:	Human, Mouse, Rat, Cow, Dog, Guinea Pig, Horse, Zebrafish (Danio rerio)
Host:	Rabbit
Clonality:	Polyclonal
Conjugate:	This Cadherin 4 antibody is un-conjugated
Application:	Western Blotting (WB)

Product Details

Immunogen:	The immunogen is a synthetic peptide directed towards the middle region of human CDH4
Sequence:	RIISGDPSGH FSVRTDPVTN EGMVTVVKAV DYELNRAFML TVMVSNQAPL
Predicted Reactivity:	Cow: 93%, Dog: 93%, Guinea Pig: 93%, Horse: 93%, Human: 100%, Mouse: 100%, Rat: 100%, Zebrafish: 77%
Characteristics:	This is a rabbit polyclonal antibody against CDH4. It was validated on Western Blot.
Purification:	Affinity Purified

Target Details

Target:	Cadherin 4 (CDH4)
Alternative Name:	CDH4 ( <a href="#">CDH4 Products</a> )

## Target Details

---

**Background:** CDH4 gene is a classical cadherin from the cadherin superfamily. The protein is a calcium-dependent cell-cell adhesion glycoprotein comprised of five extracellular cadherin repeats, a transmembrane region and a highly conserved cytoplasmic tail. Based on studies in chicken and mouse, this cadherin is thought to play an important role during brain segmentation and neuronal outgrowth. In addition, a role in kidney and muscle development is indicated. Of particular interest are studies showing stable cis-heterodimers of cadherins 2 and 4 in cotransfected cell lines. Previously thought to interact in an exclusively homophilic manner, this is the first evidence of cadherin heterodimerization.

Alias Symbols: CAD4, FLJ22202, FLJ40547, MGC126700, MGC138355, RCAD

Protein Interaction Partner: FUS, Dlg4, CDK5RAP3, CDH2,

Protein Size: 916

---

**Molecular Weight:** 82 kDa

---

**Gene ID:** 1002

---

**NCBI Accession:** [NM\\_001794](#), [NP\\_001785](#)

---

**UniProt:** [P55283](#)

---

**Pathways:** [Cell-Cell Junction Organization](#), [Regulation of Cell Size](#)

## Application Details

---

**Application Notes:** Optimal working dilutions should be determined experimentally by the investigator.

---

**Comment:** Antigen size: 916 AA

---

**Restrictions:** For Research Use only

## Handling

---

**Format:** Liquid

---

**Concentration:** Lot specific

---

**Buffer:** Liquid. Purified antibody supplied in 1x PBS buffer with 0.09 % (w/v) sodium azide and 2 % sucrose.

---

**Preservative:** Sodium azide

---

**Precaution of Use:** This product contains Sodium azide: a POISONOUS AND HAZARDOUS SUBSTANCE which should be handled by trained staff only.

---

**Handling Advice:** Avoid repeated freeze-thaw cycles.

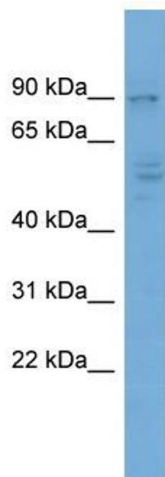
---

## Handling

Storage: -20 °C

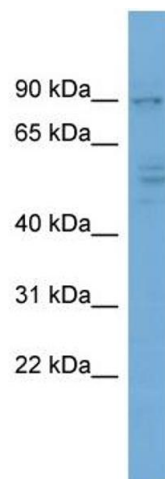
Storage Comment: For short term use, store at 2-8°C up to 1 week. For long term storage, store at -20°C in small aliquots to prevent freeze-thaw cycles.

## Images



### Western Blotting

**Image 1.** WB Suggested Anti-CDH4 Antibody Titration: 0.2-1 ug/ml ELISA Titer: 1:312500 Positive Control: NCI-H226 cell lysate CDH4 is strongly supported by BioGPS gene expression data to be expressed in NCI-H226



### Western Blotting

**Image 2.** WB Suggested Anti-CDH4 Antibody Titration: 0.2-1 µg/mL ELISA Titer: 1:12500 Positive Control: NCI-H226 cell lysate CDH4 is strongly supported by BioGPS gene expression data to be expressed in NCI-H226