

Datasheet for ABIN2782145
anti-DCT antibody (Middle Region)[Go to Product page](#)

3 Images

Overview

Quantity:	100 µL
Target:	DCT
Binding Specificity:	Middle Region
Reactivity:	Human, Mouse, Rat, Horse, Guinea Pig, Rabbit, Sheep, Cow, Dog, Zebrafish (Danio rerio)
Host:	Rabbit
Clonality:	Polyclonal
Conjugate:	This DCT antibody is un-conjugated
Application:	Western Blotting (WB), Immunohistochemistry (IHC)

Product Details

Immunogen:	The immunogen is a synthetic peptide corresponding to a region of Mouse
Sequence:	QHWLGLLGPN GTQPQIANCS VYDFFVWLHY YSVRDTLLGP GRPYKAIDFS
Predicted Reactivity:	Cow: 100%, Dog: 100%, Guinea Pig: 100%, Horse: 100%, Human: 100%, Mouse: 100%, Rabbit: 100%, Rat: 100%, Sheep: 100%, Zebrafish: 100%
Characteristics:	This is a rabbit polyclonal antibody against Dct. It was validated on Western Blot.
Purification:	Affinity Purified

Target Details

Target:	DCT
Alternative Name:	Dct (DCT Products)

Target Details

Background: The function of Dct remains unknown.
Alias Symbols: DT, TRP-2, TRP2, Tyrp-2, Tyrp2, slaty, slt
Protein Interaction Partner: Tle4, Pax3,
Protein Size: 517

Molecular Weight: 56 kDa

Gene ID: 13190

NCBI Accession: [NM_010024](#), [NP_034154](#)

UniProt: [Q6NXI2](#)

Application Details

Application Notes: Optimal working dilutions should be determined experimentally by the investigator.

Comment: Antigen size: 517 AA

Restrictions: For Research Use only

Handling

Format: Liquid

Concentration: Lot specific

Buffer: Liquid. Purified antibody supplied in 1x PBS buffer with 0.09 % (w/v) sodium azide and 2 % sucrose.

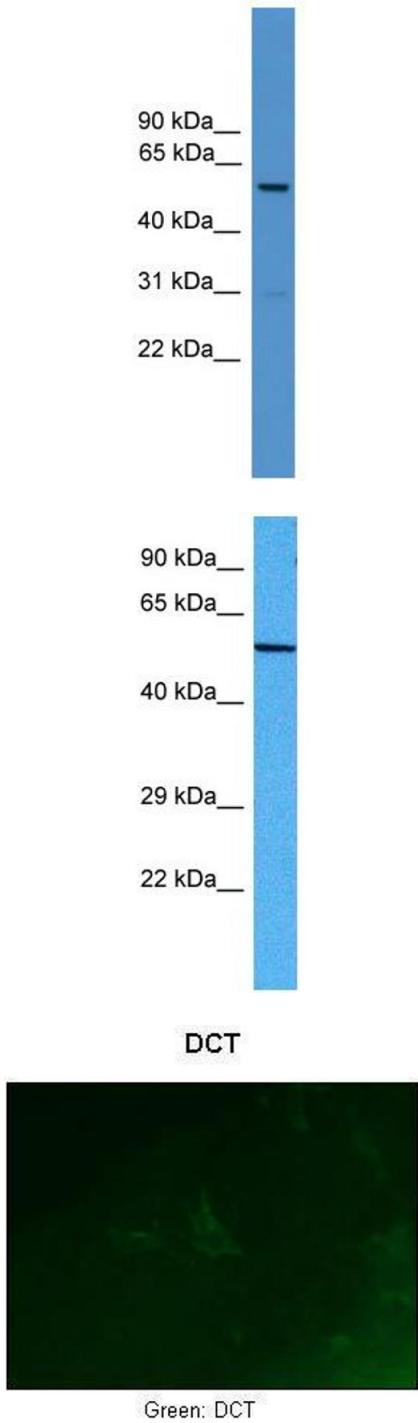
Preservative: Sodium azide

Precaution of Use: This product contains Sodium azide: a POISONOUS AND HAZARDOUS SUBSTANCE which should be handled by trained staff only.

Handling Advice: Avoid repeated freeze-thaw cycles.

Storage: -20 °C

Storage Comment: For short term use, store at 2-8°C up to 1 week. For long term storage, store at -20°C in small aliquots to prevent freeze-thaw cycles.



See IHC 1 Data and Customer Feedback for more Information

Western Blotting

Image 1. WB Suggested Anti-Dct Antibody Titration: 0.2-1 ug/ml ELISA Titer: 1:1562500 Positive Control: Mouse Heart

Western Blotting

Image 2. Host: Mouse Target Name: DCT Sample Tissue: Mouse Skeletal Muscle Antibody Dilution: 1ug/ml

Immunohistochemistry

Image 3. Sample Type : Zebrafish embryo section Primary Antibody Dilution : 1:50 Secondary Antibody : Anti-rabbit-Alexa Fluor 488 Secondary Antibody Dilution : 1:500 Color/Signal Descriptions : Green: DCT Gene Name : Dct Submitted by : Anonymous